



Technical Manual

Capri Theatre Definition File

**+ organ setups and archival Devtronix
information**

Compiled by
Wayne Bertram

Edition 2 - July 2002

CC: Ray Holland, Graham Ward, Bernie Challen,
Paul Fitzgerald, Graham Pitman, Peter Hosking,
Robert Wetherall

Contents

Rank List	3
Unit List (non detailed).....	4
Keyboard and REF list	5
STP list	6 - 9
LNK List.....	10 - 13
FNC Types and FNC list	14 -19
Capri Rank Fix (for Pre Dec 1995 Definition files)	20
Capri Tremulants	21
Changing Piano to Pizzicato	22
Pitch Offsets	24
UNT Addresses and Details	25
Definition changes to add Cheek buttons	28
Capri Crescendo list	30
Notes	31
Console Tab Layout (Large)	Centre
Rank List	34
Rank Addresses	35 - 47
Shutter numbering etc	48
Key sensitivity setup	49
Copying Devtronix Floppies to a PC	50
Devtronix Computer Disc Controller Setup.....	51
Devtronix Information inc cable pinouts	52
Input board Layout	54
Output board Layout.....	55
PC Interface Card Layout.....	56
Swell and Toe Stud Layout	57
Advanced Playback and Panel Programming	58
Console Tab Layout (Small)	64

Rank List

List produced by ORGTOOLS VERSION 2.62
Correct rank list after full re-spec

RNK1: Main Open Diapason
RNK2: Main Concert Flute
RNK3: Main Concert Flute Celeste
RNK4: Main Musette
RNK5: Main Salicional
RNK6: Main Gamba Celeste
RNK7: Main Tibia Clausa (Tibia Minor)
RNK8: Main Tuba Horn
RNK9: Main Gamba
RNK10: Main Vox Humana
RNK11: Solo Clarinet
RNK12: Solo English Horn
RNK13: Solo Harmonic Tuba
RNK14: Solo Kinura
RNK15: Solo Lieblich Flute
RNK16: Solo Oboe Horn
RNK17: Solo Orchestral Oboe
RNK18: Solo Quintadena
RNK19: Solo String
RNK20: Solo Tibia Clausa
RNK21: Main Trumpet
RNK22: Solo Vox Humana
RNK23: Chrysoglott
RNK24: Marimba Harp
RNK25: Piano
RNK26: Chimes
RNK27: Glockenspiel
RNK28: Sleighbells
RNK29: Xylophone
RNK30: Diaphonic Diapason
RNK31: Solo String Celeste
RNK32: Main Viole d'Orchestre
RNK33: Main Viole d'Orchestre Celeste
RNK34: Tibia Plena (Clarabella)
RNK35: Solo Horn Diapason
RNK36: Solo Saxophone
RNK37: Main Salicional Celeste
RNK38: Spare
RNK39: Spare
RNK40: Spare
RNK41: Spare
RNK42: Spare
RNK43: Spare
RNK44: Spare
RNK45: MIDI Rank 1 (Solo)
RNK46: MIDI Rank 2 (Bombarde)
RNK47: MIDI Rank 3 (Great)
RNK48: MIDI Rank 4 (Accomp)
RNK49: MIDI Rank 5 (Pedal)
RNK50: Rank #50

Unit List (non detailed)

List produced by ORGTOOLS VERSION 2.52
Definition file name: Respec F - Crescendo

UNT1:	Brush Cymbal	UNT66:	M.S. 2	UNT136:	Tremulant - Musette, Trumpet
UNT2:	Tap Cymbal	UNT67:	M.S. 3	UNT137:	Tremulant - Quint, Solo String & Celeste
UNT3:	Tap Cymbal #2	UNT68:	M.S. 4	UNT138:	Sand Block
UNT4:	Cymbal Roll	UNT69:	M.S. 5	UNT139:	Unit #139
UNT5:	Snare Drum Roll	UNT70:	M.S. 6	UNT140:	Prize Fight Gong 1
UNT6:	Snare Drum Roll #2	UNT71:	M.S. 7	UNT141:	Prize Fight Gong 2
UNT7:	Snare Drum	UNT72:	M.S. 8	UNT142:	Prize Fight Gong 3
UNT8:	Tom Tom	UNT73:	M.S. 9	UNT143:	Prize Fight Gong 4
UNT9:	Tambourine	UNT74:	M.S. 10	UNT144:	Steam Whistle 1
UNT10:	Castanets	UNT75:	M.S. 11	UNT145:	Steam Whistle 2
UNT11:	Maracas	UNT76:	M.S. 12	UNT146:	Steam Whistle 3
UNT12:	Sand Block	UNT77:	M.S. 13	UNT147:	Steam Whistle 4
UNT13:	Chinese Block	UNT78:	M.S. 14	UNT148:	Steam Whistle 5
UNT14:	Crash Cymbal	UNT79:	M.S. 15	UNT149:	Steam Whistle 6
UNT15:	Boat Whistle	UNT80:	M.S. 16	UNT150:	Steam Whistle 7
UNT16:	Bird Whistle	UNT81:	M.S. 17	UNT151:	Steam Whistle 8
UNT17:	Horses Hooves	UNT82:	M.S. 18	UNT152:	Steam Whistle 9
UNT18:	Surf	UNT83:	M.S. 19	UNT153:	Steam Whistle 10
UNT19:	Fire Bell	UNT84:	M.S. 20	UNT154:	Steam Whistle 11
UNT20:	Telephone Bell	UNT85:	M.S. 21	UNT155:	Steam Whistle 12
UNT21:	Train Whistle	UNT86:	M.S. 22	UNT156:	Steam Whistle 13
UNT22:	Triangle	UNT87:	M.S. 23	UNT157:	Steam Whistle 14
UNT23:	Piano Sustain	UNT88:	M.S. 24	UNT158:	Steam Whistle 15
UNT24:	Ding Dong	UNT89:	Tremulant - Diapason, Flute, Flute Celeste	UNT159:	Steam Whistle 16
UNT25:	Bass Drum	UNT90:	Tremulant - Salicional & Celeste, Gamba & Celeste	UNT160:	Piano Spotlight
UNT26:	Kettle Drum	UNT91:	Tremulant - Main Vox	UNT161:	Unit #161
UNT27:	Air Raid Siren	UNT92:	Tremulant - Tuba Horn	UNT162:	Unit #162
UNT28:	Klaxon	UNT93:	Tremulant - Main Tibia Clausa (Tibia Minor)	UNT163:	Unit #163
UNT29:	Solo Shutter 1	UNT94:	Tremulant - Kinura, Orchestral Oboe	UNT164:	Unit #164
UNT30:	S.S. 2	UNT95:	BEGUINE	UNT165:	Unit #165
UNT31:	S.S. 3	UNT96:	BOLERO	UNT166:	Unit #166
UNT32:	S.S. 4	UNT97:	BOSSA NOVA	UNT167:	Unit #167
UNT33:	S.S. 5	UNT98:	CHA-CHA		
UNT34:	S.S. 6	UNT99:	FOX TROT		
UNT35:	S.S. 7	UNT100:	MARCH 4/4		
UNT36:	S.S. 8	UNT101:	MARCH 6/8		
UNT37:	S.S. 9	UNT102:	RHUMBA		
UNT38:	S.S. 10	UNT103:	SAMBA		
UNT39:	S.S. 11	UNT104:	SWING		
UNT40:	S.S. 12	UNT105:	TANGO		
UNT41:	S.S. 13	UNT106:	WALTZ		
UNT42:	S.S. 14	UNT107:	Crescendo Ind. 1		
UNT43:	S.S. 15	UNT108:	Crescendo Ind. 2		
UNT44:	S.S. 16	UNT109:	Crescendo Ind. 3		
UNT45:	S.S. 17	UNT110:	Crescendo Ind. 4		
UNT46:	S.S. 18	UNT111:	Crescendo Ind. 5		
UNT47:	S.S. 19	UNT112:	Crescendo Ind. 6		
UNT48:	S.S. 20	UNT113:	Crescendo Ind. 7		
UNT49:	S.S. 21	UNT114:	Crescendo Ind. 8		
UNT50:	S.S. 22	UNT115:	Crescendo Ind. 9		
UNT51:	S.S. 23	UNT116:	Crescendo Ind. 10		
UNT52:	S.S. 24	UNT126:	Unit #126		
UNT53:	Tremulant - Harmonic Tuba	UNT127:	PIANO PUMP - NOT REQUIRED		
UNT54:	Tremulant - Solo Tibia Clausa	UNT128:	Snare Activate		
UNT55:	Tremulant - Lieblich Flute	UNT129:	Cheek Button 7		
UNT56:	Tremulants - Horn Diapason, Oboe Horn, Clarinet	UNT130:	Cheek Button 8		
UNT57:	Tremulant - Saxophone	UNT131:	Tom Tom Re-it (used for Snare Rum roll)		
UNT58:	Tremulant - Solo Vox	UNT132:	Reiterating Tambourine		
UNT59:	Tremulant - VDO & Celeste	UNT133:	Sleighbells Top G		
UNT60:	Unit #60	UNT134:	Sleighbells Top G#		
UNT61:	Unit #61	UNT135:	Sleighbells Top A		
UNT62:	Unit #62				
UNT63:	Unit #63				
UNT64:	Unit #64				
UNT65:	Main Shutter 1				

Keyboard and REF lists

KBD1: Pedal
KBD2: Accomp
KBD3: Great
KBD4: Bombarde
KBD5: Solo
KBD6: Pedal 2T
KBD7: Accomp 2T
KBD8: Great 2T
KBD9: GREAT No. 2
KBD10: Accomp No. 2
KBD11: PEDAL No. 2

REF1: FNC304 Reference: 4' Solo Chrysoglott
REF2: FNC305 Reference: 8' Accomp 2T Solo Harmonic Tuba
REF3: FNC375 Reference: 16' Great Main Musette
REF4: FNC376 Reference: 8' Great Main Musette
REF5: FNC384 Reference: 4' Accomp Marimba Harp
REF6: FNC385 Reference: 4' Accomp Marimba Harp reiterate
REF7: FNC404 Reference: Great 1' Fife (FLUTE)
REF8: FNC467 Reference: Pedal Mixture
REF9: FNC468 Reference: Accomp Mixture
REF10: FNC469 Reference: Great Mixture
REF11: FNC470 Reference: Strony 32' Part 1
REF12: FNC471 Reference: Strony 32' Part 2
REF13: FNC472 Reference: Carillon (Bombarde)
REF14: FNC473 Reference: Prize Fight Gong
REF15: FNC474 Reference: Steam Whistle Part 1
REF16: FNC475 Reference: Steam Whistle Part 2
REF17: FNC183 Reference: OLD Solo to Bombard Couplers
REF18: FNC433 Reference: Solo to Great Mel Coupler 16' AUTO OFF!!!
REF19: FNC434 Reference: Solo to Great Mel Coupler 8' AUTO OFF!!!
REF20: FNC435 Reference: Solo to Great Mel Coupler 16' AUTO
REF21: FNC436 Reference: Solo to Great Mel Coupler 8' AUTO
REF22: FNC383 Reference: MIDI FUNCTION MULTIPLIER

STP List

STP1:	32' Grand Resultant	STP57:	8' Accomp Concert Flutes (2 ranks)
STP2:	32' Tibia Resultant	STP58:	8' Accomp Solo Lieblich Flute
STP3:	16' Pedal Main Tuba Horn	STP59:	8' Accomp Solo Vox Humana
STP4:	16' Pedal Diaphonic Diapason	STP60:	8' Accomp Main Vox Humana
STP5:	16' Pedal Main Open Diapason	STP61:	4' Accomp Main Open Diapason
STP6:	16' Pedal Solo Tibia Clausa	STP62:	4' Accomp Solo Horn Diapason
STP7:	16' Pedal Main Tibia Clausa (Tibia Minor)	STP63:	4' Accomp Main Tibia Clausa (Tibia Minor)
STP8:	16' Pedal Solo Clarinet	STP64:	4' Accomp Solo Strings (2 ranks)
STP9:	16' Pedal Main Gamba	STP65:	4' Accomp Gambettes (2 ranks)
STP10:	16' Pedal Main Concert Flute	STP66:	4' Accomp Violes (2 ranks)
STP11:	8' Pedal Solo English Horn	STP67:	4' Accomp Salicets (2 ranks)
STP12:	8' Pedal Main Trumpet	STP68:	4' Accomp Concert Flutes (2 ranks)
STP13:	8' Pedal Solo Harmonic Tuba	STP69:	4' Accomp Solo Lieblich Flute
STP14:	8' Pedal Main Tuba Horn	STP70:	4' Accomp Solo Vox Humana
STP15:	8' Pedal Diaphonic Diapason	STP71:	4' Accomp Main Vox Humana
STP16:	8' Pedal Main Open Diapason	STP72:	2-2/3' Accomp Main Concert Flute
STP17:	8' Pedal Solo Horn Diapason	STP73:	2-2/3' Accomp Solo Lieblich Flute
STP18:	8' Pedal Solo Tibia Clausa	STP74:	2' Accomp Main Concert Flute
STP19:	8' Pedal Main Tibia Clausa (Tibia Minor)	STP75:	2' Accomp Solo Lieblich Flute
STP20:	8' Pedal Solo Clarinet	STP76:	4' Accomp to Accomp
STP21:	8' Pedal String Ensemble 1	STP77:	8' Solo to Accomp
STP22:	8' Pedal String Ensemble 2	STP78:	8' Accomp Piano pizzicato
STP23:	8' Pedal Solo Oboe Horn	STP79:	4' Accomp Piano pizzicato
STP24:	8' Pedal Main Concert Flute	STP80:	16' Accomp Marimba Harp
STP25:	16' and 8' Pedal Piano Pizzicato	STP81:	8' Accomp Marimba Harp
STP26:	Pedal Bass Drum	STP82:	8' Accomp Chrysoglott
STP27:	8' Accomp to Pedal	STP83:	Accomp Tap Cymbal #2
STP28:	8' Great to Pedal	STP84:	Accomp Brush Cymbal
STP29:	4' Great to Pedal	STP85:	Accomp Snare Drum Roll
STP30:	8' Solo to Pedal	STP86:	Accomp Tom Tom
STP31:	Accomp Sand Block	STP87:	Accomp Tambourine
STP32:	8' Accomp 2T Solo English Horn	STP88:	Accomp Castanets
STP33:	Pedal Kettle Drum	STP89:	Accomp Sleighbells
STP34:	New Crash Cymbal	STP90:	8' Solo Main Open Diapason
STP35:	Pedal Cymbal Roll	STP91:	8' Solo Solo Horn Diapason
STP36:	Pedal Tap Cymbal	STP92:	8' Solo Solo Tibia Clausa
STP37:	Pedal Brush Cymbal	STP93:	8' Solo Main Tibia Clausa (Tibia Minor)
STP38:	8' Accomp Solo English Horn	STP94:	8' Solo Solo Orchestral Oboe
STP39:	8' Accomp Main Trumpet	STP95:	8' Solo Main Musette
STP40:	8' Accomp Solo Harmonic Tuba	STP96:	8' Solo Solo Kinura
STP41:	8' Accomp Main Tuba Horn	STP97:	8' Solo Solo Clarinet
STP42:	8' Accomp Main Open Diapason	STP98:	8' Solo Solo Saxophone
STP43:	8' Accomp Solo Horn Diapason	STP99:	8' Solo String Ensemble 1
STP44:	8' Accomp Main Tibia Clausa (Tibia Minor)	STP100:	8' Solo String Ensemble 2
STP45:	8' Accomp Solo Clarinet	STP101:	8' Solo Solo Oboe Horn
STP46:	8' Accomp Solo Saxophone	STP102:	8' Solo Solo Quintadena
STP47:	8' Accomp Solo Strings (2 ranks)	STP103:	8' Solo Voxes (2 ranks)
STP48:	8' Accomp Gambas (2 ranks)	STP104:	16' Great Solo English Horn
STP49:	8' Accomp Violes d'Orchestre (2 ranks)	STP105:	16' Great Main Trumpet
STP50:	8' Accomp Salicionals (2 ranks)	STP106:	16' Great Solo Harmonic Tuba
STP51:	8' Solo Solo English Horn	STP107:	4' Solo Solo Tibia Clausa
STP52:	8' Solo Main Trumpet	STP108:	4' Solo Main Tibia Clausa (Tibia Minor)
STP53:	8' Solo Solo Harmonic Tuba	STP109:	2 2/3' Solo Tibias (2 ranks)
STP54:	8' Solo Main Tuba Horn	STP110:	2' Solo Solo Tibia Clausa
STP55:	8' Accomp Solo Oboe Horn	STP111:	1-3/5' Solo Solo Tibia Clausa
STP56:	8' Accomp Solo Quintadena	STP112:	8' Solo Piano Pizzicato

STP List

STP113:	16' Solo Marimba Harp	STP168:	1' Bombarde Solo Tibia Clausa
STP114:	8' Solo Xylophone	STP169:	8' Great unison off
STP115:	8' Solo Glockenspiel	STP170:	4' Great to Great
STP116:	16' Solo Chrysoglott	STP171:	16' Solo to Great
STP117:	8' Solo Chimes	STP172:	8' Solo to Great
STP118:	8' Solo Sleighbells	STP173:	16' Bombarde to Bombarde
STP119:	16' Solo to Solo	STP174:	4' Bombarde to Bombarde
STP120:	8' Solo unison off	STP175:	16' Great to Bombarde
STP121:	8' Accomp 2T Main Trumpet	STP176:	8' Great to Bombarde
STP122:	8' Accomp 2T Solo Harmonic Tuba	STP177:	4' Great to Bombarde
STP123:	8' Accomp 2T Main Tuba Horn	STP178:	16' Solo to Bombarde
STP124:	8' Accomp 2T Main Open Diapason	STP179:	Tremulant - Harmonic Tuba
STP125:	8' Accomp 2T Tibias (2 ranks)	STP180:	Tremulant - Vibraphone
STP126:	8' Accomp 2T Solo Clarinet	STP181:	Flute Celeste OFF
STP127:	4' Accomp 2T Tibias (2 ranks)	STP182:	String Celestes OFF
STP128:	4' Accomp 2T Glockenspiel	STP183:	Percussions Re-it ON
STP129:	8' Accomp 2T Chimes	STP184:	16' Great Main Tuba Horn
STP130:	Accomp Percussion to 2nd Touch	STP185:	16' Great Main Open Diapason
STP131:	Accomp Traps to 2nd Touch	STP186:	16' Great Solo Horn Diapason
STP132:	4' Great to Accomp 2T	STP187:	16' Great Solo Tibia Clausa
STP133:	8' Solo to Accomp 2T	STP188:	16' Great Main Tibia Clausa (Tibia Minor)
STP134:	16' Great 2T Solo English Horn	STP189:	16' Great Solo Orchestral Oboe
STP135:	16' Bombarde Solo English Horn	STP190:	16' Great Main Musette
STP136:	16' Bombarde Main Trumpet	STP191:	16' Great Solo Clarinet
STP137:	16' Bombarde Solo Harmonic Tuba	STP192:	16' Great Solo Saxophone
STP138:	16' Bombarde Main Tuba Horn	STP193:	16' Great String Ensemble 1
STP139:	16' Bombarde Main Open Diapason	STP194:	16' Great String Ensemble 2
STP140:	16' Bombarde Solo Tibia Clausa	STP195:	16' Great Solo Oboe Horn
STP141:	16' Bombarde Main Tibia Clausa (Tibia Minor)	STP196:	16' Great Solo Quintadena
STP142:	16' Bombarde Solo Saxophone	STP197:	16' Great Main Concert Flute
STP143:	16' Bombarde String Ensemble	STP198:	16' Great Solo Lieblich Flute
STP144:	16' Bombarde Solo Vox Humana	STP199:	16' Great Solo Vox Humana
STP145:	16' Bombarde Main Vox Humana	STP200:	16' Great Main Vox Humana
STP146:	8' Bombarde Solo English Horn	STP201:	8' Great Solo English Horn
STP147:	8' Bombarde Main Trumpet	STP202:	8' Great Main Trumpet
STP148:	8' Bombarde Solo Harmonic Tuba	STP203:	8' Great Solo Harmonic Tuba
STP149:	8' Bombarde Main Tuba Horn	STP204:	8' Great Main Tuba Horn
STP150:	8' Bombarde Main Open Diapason	STP205:	8' Great Main Open Diapason
STP151:	8' Bombarde Solo Tibia Clausa	STP206:	8' Great Solo Horn Diapason
STP152:	8' Bombarde Main Tibia Clausa (Tibia Minor)	STP207:	8' Great Solo Tibia Clausa
STP153:	8' Bombarde Solo Saxophone	STP208:	8' Great Main Tibia Clausa (Tibia Minor)
STP154:	8' Great Main Musette	STP209:	8' Great Solo Orchestral Oboe
STP155:	8' Great Solo Kinura	STP210:	4' Solo to Solo
STP156:	8' Great Solo Clarinet	STP211:	Solo Third
STP157:	8' Great Solo Saxophone	STP212:	Solo Fifth
STP158:	8' Bombarde String Ensemble	STP213:	Solo Seventh
STP159:	8' Bombarde Solo Vox	STP214:	8' Great Solo Strings (2 ranks)
STP160:	8' Bombarde Main Vox Humana	STP215:	8' Great Gambas (2 ranks)
STP161:	4' Bombarde Solo Tibia Clausa	STP216:	8' Great Violes d'Orchestre (2 ranks)
STP162:	4' Bombarde Main Tibia Clausa (Tibia Minor)	STP217:	8' Great Salicionals (2 ranks)
STP163:	4' Bombarde String Ensemble	STP218:	8' Great Solo Oboe Horn
STP164:	2-2/3' Bombarde Solo Tibia Clausa	STP219:	8' Great Solo Quintadena
STP165:	2-2/3' Bombarde Main Tibia Clausa (Tibia Minor)	STP220:	8' Great Concert Flutes (2 ranks)
STP166:	2' Bombarde Solo Tibia Clausa	STP221:	8' Great Solo Lieblich Flute
STP167:	2' Bombarde Main Tibia Clausa (Tibia Minor)	STP222:	8' Great Solo Vox Humana
		STP223:	8' Great Main Vox Humana

STP List

STP224:	5-1/3' Great Solo Tibia Clausa	STP280:	Toe Stud 12
STP225:	4' Great Main Open Diapason	STP281:	Toe Stud 13
STP226:	4' Great Solo Horn Diapason	STP282:	Toe Stud 14
STP227:	4' Great Solo Tibia Clausa	STP283:	Toe Stud 15
STP228:	4' Great Main Tibia Clausa (Tibia Minor)	STP284:	Toe Stud 16
STP229:	4' Great Solo Strings (2 ranks)	STP285:	Toe Stud 17
STP230:	4' Great Gambas (2 ranks)	STP286:	-----
STP231:	4' Great Violes (2 ranks)	STP287:	SFORZANDO (2T)
STP232:	4' Great Salicionals (2 ranks)	STP288:	-----
STP233:	4' Great Solo Lieblich Flute	STP289:	-----
STP234:	3-1/5' Great Solo Tibia Clausa	STP290:	-----
STP235:	2-2/3' Great Solo Tibia Clausa	STP291:	-----
STP236:	2-2/3' Great Main Tibia Clausa (Tibia Minor)	STP292:	-----
STP237:	2-2/3' Great Solo Lieblich Flute	STP293:	-----
STP238:	2' Great Solo Tibia Clausa	STP294:	-----
STP239:	2' Great Main Tibia Clausa (Tibia Minor)	STP295:	-----
STP240:	2' Great Main Viole d'Orchestre	STP296:	-----
STP241:	2' Great Main Concert Flute	STP297:	-----
STP242:	2' Great Solo Lieblich Flute	STP298:	-----
STP243:	1-3/5' Great Main Tibia Clausa (Tibia Minor)	STP299:	-----
STP244:	1' Great Main Tibia Clausa (Tibia Minor)	STP300:	-----
STP245:	IV Mixture	STP301:	-----
STP246:	16' Great to Great	STP302:	-----
STP247:	16' Great 2T Solo Harmonic Tuba	STP303:	-----
STP248:	8' Great 2T Solo English Horn	STP304:	-----
STP249:	8' Great 2T Solo Harmonic Tuba	STP305:	-----
STP250:	8' Solo to Great 2T	STP306:	Kick Switch for Sostenuto
STP251:	8' Solo to Great	STP307:	Stop #307
STP252:	Tremulant - Tibias/Lieblich Flute	STP308:	Stop #308
STP253:	Accomp Sleighbells (trap type)	STP309:	Stop #309
STP254:	Accomp Triangle	STP310:	DO NOT USE
STP255:	Accomp Chinese Block	STP311:	DO NOT USE
STP256:	16' Great Piano Pizzicato	STP312:	DO NOT USE
STP257:	8' Great Piano Pizzicato	STP313:	Piano Light OFF
STP258:	4' Great Piano Pizzicato	STP314:	Accomp PST 2 (For transpose -1)
STP259:	8' Great Marimba Harp	STP315:	Accomp PST 3 (For transpose 0)
STP260:	8' Great Xylophone	STP316:	Accomp PST 4 (For transpose +1)
STP261:	8' Great Glockenspiel	STP317:	Accomp PST 13 (For transpose -1)
STP262:	8' Great Chrysoglott	STP318:	Accomp PST 14 (For transpose 0)
STP263:	8' Bombarde Piano Pizzicato	STP319:	Accomp PST 15 (For transpose +1)
STP264:	Tremulant - Voxes	STP320:	Stop for TRANSPOSE -1
STP265:	Tremulant - Solo 1	STP321:	Stop for TRANSPOSE 0 (Neutral)
STP266:	Tremulant - Solo II	STP322:	Stop for TRANSPOSE +1
STP267:	Tremulant - Main 1	STP323:	Stop #323
STP268:	Tremulant - Main 2	STP324:	Stop #324
STP269:	Tremulant - Tuba Horn	STP325:	Stop #325
STP270:	8' Bombarde Marimba Harp	STP326:	All Swells Open (1st contact of Sforzando)
STP271:	8' Bombarde Xylophone	STP327:	Crescendo Coupler to Crescendo I
STP272:	8' Bombarde Glockenspiel	STP328:	-----
STP273:	8' Bombarde Chrysoglott	STP329:	-----
STP274:	-----	STP330:	-----
STP275:	Toe Stud 7	STP331:	-----
STP276:	Toe Stud 8	STP332:	-----
STP277:	Toe Stud 9	STP333:	-----
STP278:	Toe Stud 10	STP334:	-----
STP279:	Toe Stud 11	STP335:	-----

STP List

- STP336: -----
- STP337: -----
- STP338: -----
- STP339: -----
- STP340: MIDI ON ALL MANUALS
- STP341: -----
- STP342: -----
- STP343: Transpose up Latch for LED
- STP344: Transpose DOWN latch for LED
- STP345: -----
- STP346: -----
- STP347: -----
- STP348: -----
- STP349: -----
- STP350: -----
- STP351: -----
- STP352: -----
- STP353: -----
- STP354: -----
- STP355: -----
- STP356: -----
- STP357: -----
- STP358: -----
- STP359: -----
- STP360: -----
- STP361: -----
- STP362: -----
- STP363: -----
- STP364: -----
- STP365: -----
- STP366: -----
- STP367: -----
- STP368: -----
- STP369: -----
- STP370: -----

LNK List

LNK1: 8' Pedal Main Concert Flute Celeste (STP24 and ~STP181) FNC23	LNK15: 4' Accomp 2T Piano pizzicato (STP79 and STP130) FNC578,FNC137
LNK2: 8' Accomp Solo String Celeste (STP47 and ~STP182) FNC38	LNK16: 16' Accomp Marimba Harp (STP80 and ~STP130) FNC43
LNK3: 8' Accomp Main Gamba Celeste (STP48 and ~STP182) FNC62	LNK17: 16' Accomp 2T Marimba Harp (STP80 and STP130) FNC44
LNK4: 8' Accomp Main Viole d'Orchestre Celeste (STP49 and ~STP182) FNC40	LNK18: 8' Accomp Marimba Harp (STP81 and ~STP130) FNC45
LNK5: 8' Accomp Main Salicional Celeste (STP50 and ~STP182) FNC41	LNK19: 8' Accomp 2T Marimba Harp (STP81 and STP130) FNC46
LNK6: 8' Accomp Main Concert Flute Celeste (STP57 and ~STP181) FNC66	LNK20: 8' Accomp Chrysoglott (STP82 and ~STP130) FNC47
LNK7: 4' Accomp Solo String Celeste (STP64 and ~STP182) FNC57	LNK21: 8' Accomp 2T Chrysoglott (STP82 and STP130) FNC48
LNK8: 4' Accomp Main Gamba Celeste (STP65 and ~STP182) FNC74	LNK22: Accomp Tap Cymbal #2 (STP83 and ~STP131) FNC91
LNK9: 4' Accomp Main Viole d'Orchestre Celeste (STP66 and ~STP182) FNC58	LNK23: Accomp 2T Tap Cymbal #2 (STP83 and STP131) FNC406
LNK10: 4' Accomp Main Salicional Celeste (STP67 and ~STP182) FNC76	LNK24: Accomp Brush Cymbal (STP84 and ~STP131) FNC90
LNK11: 4' Accomp Main Concert Flute Celeste (STP68 and ~STP181) FNC77	LNK25: Accomp 2T Brush Cymbal (STP84 and STP131) FNC405
LNK12: 8' Accomp Piano pizzicato (STP78 and ~STP130) FNC575,FNC84	LNK26: Accomp Snare Drum Roll (STP85 and ~STP131) FNC92,FNC537,FNC544
LNK13: 8' Accomp 2T Piano pizzicato (STP78 and STP130) FNC576,FNC136	LNK27: Accomp Snare Drum 2T (STP85 and STP131) FNC407,FNC417
LNK14: 4' Accomp Piano pizzicato (STP79 and ~STP130) FNC577,FNC85	LNK28: Accomp Tom Tom (STP86 and ~STP131) FNC93

LNK List

- LNK29: Accomp 2T Tom Tom
(STP86 and STP131)
FNC408
- LNK30: Accomp Tambourine
(STP87 and ~STP131)
FNC94
- LNK31: Accomp 2T Tambourine
(STP87 and STP131)
FNC409
- LNK32: Accomp Castanets
(STP88 and ~STP131)
FNC95
- LNK33: Accomp 2T Castanets
(STP88 and STP131)
FNC410
- LNK34: Accomp Maracas
(STP89 and ~STP131)
FNC96
- LNK35: Accomp 2T Maracas
(STP89 and STP131)
FNC411
- LNK36: Accomp Chinese Block
(STP255 and ~STP131)
FNC97
- LNK37: Accomp 2T Chinese Block
(STP255 and STP131)
FNC412
- LNK38: Accomp Triangle
(STP254 and ~STP131)
FNC100
- LNK39: Accomp 2T Triangle
(STP254 and STP131)
FNC413
- LNK40: Accomp Sleighbell
(trap type)" (STP253 and ~STP131)
FNC101,FNC102,FNC103
- LNK41: Accomp Sliehell
(trap type) 2T" (STP253 and STP131)
FNC414,FNC415,FNC416
- LNK42: 8' Solo Solo Vox Humana
(STP103 and ~STP182)
FNC118
- LNK43: 2-2/3' Solo Main Tibia Claus
(Tibia Minor)` (STP109)
FNC151
- LNK44: 2' Solo Main Tibia Claus
(Tibia Minor)` (STP110)
FNC152
- LNK45: 1-3/5' Solo Main Tibia Claus
(Tibia Minor)` (STP111)
FNC165
- LNK46: Additional FNC's for STPs 119, 211 & 212
((STP119 and STP211) and STP212) FNC368,
FNC369,---,---,---,---,---,---
- LNK47: 16' Great Main Concert Flute Celeste
(STP197 and ~STP181)
FNC282
- LNK48: 8' Great Solo String Celeste
(STP214 and ~STP182)
FNC286
- LNK49: 8' Great Main Gamba Celeste
(STP215 and ~STP182)
FNC221
- LNK50: 8' Great Main Viole d'Orchestre Celeste
(STP216 and ~STP182)
FNC287
- LNK51: 8' Great Main Salicional Celeste
(STP217 and ~STP182)
FNC288
- LNK52: 8' Great Main Concert Flute Celeste
(STP220 and ~STP181)
FNC297
- LNK53: 4' Great Solo String Celeste
(STP229 and ~STP182)
FNC299
- LNK54: 4' Great Main Gamba Celeste
(STP230 and ~STP182)
FNC235
- LNK55: 4' Great Main Viole d'Orchestre Celeste
(STP231 and ~STP182)
FNC534
- LNK56: 4' Great Main Salicional Celeste
(STP232 and ~STP182)
FNC300

LNK List

LNK57: 4' Accomp 2T Piano reiterate (STP78 and STP183) FNC377	(STP2) FNC427,FNC536,FNC535
LNK58: 4' Accomp 2T Glockenspiel reiterate (STP128 and STP183) FNC378	LNK71: 32' Additive Pedal Tibia Resultant (((STP2 and STP5) and STP6) and STP7) FNC429
LNK59: Piano Spotlight (((STP25 or STP78) or STP79) or STP112) and ~STP313) FNC461	LNK72: 8' Pedal String Ensemble I (STP21) FNC532,FNC533
LNK60: Piano Spotlight (((STP256 or STP257) or STP258) or STP263) and ~STP313) FNC461	LNK73: 8' Pedal String Ensemble II (STP22) FNC526,FNC527,FNC528,FNC529,FNC530,FNC531
LNK61: 8' Solo to Great pizzicato (STP251) FNC264	LNK74: Great IV Mixture (STP245)
LNK62: 16' Great String Ensemble I (STP193) FNC492,FNC493	LNK75: ----- (---) ---,---,---,---,---,---,---,---
LNK63: 16' Great String Ensemble II (STP194) FNC486,FNC487,FNC488,FNC489,FNC490,FNC491	LNK76: Accomp Harp Re-it (STP81 and STP183) FNC554
LNK64: 16' Bombarde String Ensemble (STP143)	LNK77: Accomp Sub Harp Re-it (STP80 and STP183) FNC555
LNK65: 8' Bombarde String Ensemble (STP158)	LNK78: Great Harp Re-it (STP259 and STP183) FNC559
LNK66: 4' Bombarde String Ensemble (STP163)	LNK79: Great Xylophone Re-it (STP260 and STP183) FNC560
LNK67: 8' Solo String Ensemble I (STP99) FNC500,FNC501	LNK80: Great Glock Re-it (STP261 and STP183) FNC561
LNK68: 8' Solo String Ensemble II (STP100) FNC494,FNC495,FNC496,FNC497,FNC498,FNC499	LNK81: Bombarde Harp Re-it (STP270 and STP183) FNC562
LNK69: 32' Grand Resultant (STP1)	LNK82: Bombarde Xylophone Re-it (STP271 and STP183) FNC563
LNK70: 32' Pedal Tibia Resultant	LNK83: Bombarde Glock Re-it (STP272 and STP183) FNC564

LNK List

LNK84: Solo Sub Harp Re-it
(STP113 and STP183)
FNC556

LNK85: Solo Xylophone Re-it
(STP114 and STP183)
FNC557

LNK86: Solo Glock Re-it
(STP115 and STP183)
FNC558

LNK87: 16' and 8' Pedal Piano pizzicato
(STP25)
FNC573,FNC24,FNC574,FNC25

LNK88: 8' Solo Piano pizzicato
(STP112)
FNC579,FNC124

LNK89: 16' Great Piano pizzicato
(STP256)
FNC580,FNC246

LNK90: 8' Great Piano pizzicato
(STP257)
FNC581,FNC247

LNK91: 4' Great Piano pizzicato
(STP258)
FNC582,FNC248

LNK92: 8' Bombarde Piano pizzicato
(STP263)
FNC583,FNC174

FNC Types and FNC List

FNC Type 1: Divisional Coupler
FNC Type 2: Rank to Rank Coupler
FNC Type 3: Normal Rank Output
FNC Type 4: Normal trap Output
FNC Type 5: Direct Unit Output
FNC Type 6: Division Unison Off
FNC Type 7: Keyboard Sustain
FNC Type 8: Keyboard legato
FNC Type 9: Transposer
FNC Type 10 : Melody Coupler (Obsolete)
FNC Type 11: Resultant Coupler
FNC Type 12: Function Multiplier
FNC Type 13: Pizzicato Modifier
FNC Type 14: Reiterate Modifier
FNC Type 15: Channel Coupler
FNC Type 16: Channel Output
FNC Type 17: Stop reverser
FNC Type 18: Keyboard Sostenuto
FNC Type 19: MIDI Program Change
FNC Type 20: MIDI Analog Controller Output
FNC Type 21: MIDI Fixed Controller Output
FNC Type 22: MIDI Set Channel Note Velocity
FNC Type 23: Activate Piston
FNC Type 24: Function Delay
FNC Type 25: Function Command
FNC Type 26: Signal Toggle
FNC Type 27: MIDI Stop Controller Output
FNC Type 28: Piston Sequencer
FNC Type 29: Manual Reverse
FNC Type 30: Signal Inverter
FNC Type 31: Signal Pulser
FNC Type 32: Record Raw MIDI Data
FNC Type 33: Proteus Bank/Program Selector
FNC Type 34: MIDI Program Change Toggle
FNC Type 35: Allen Stop Control
FNC Type 36: Generic MIDI Stop Control
FNC Type 37: MIDI Registered Parameter (RPN)
FNC Type 38: MIDI Non-registered Parameter (NRPN)
FNC Type 39: Simulated Input Address
FNC Type 40: Group Clear
FNC Type 41: Group Latch
FNC Type 42: MIDI Realtime Start Message
FNC Type 43: MIDI Realtime Continue Message
FNC Type 44: MIDI Realtime Stop Message
FNC Type 45:
FNC Type 46:
FNC Type 47:
FNC Type 48:
FNC Type 49:
FNC Type 50:
FNC Type 51:
FNC Type 52:
FNC Type 53:
FNC Type 54:
FNC Type 55:

FNC LIST

FNC1: 16' Pedal Diaphonic Diapason
FNC2: 16' Pedal Main Open Diapason
FNC3: 16' Pedal Main Tibia Clausa (Tibia Minor)
FNC4: 8' Pedal Main Trumpet
FNC5: 8' Pedal Solo Horn Diapason
FNC6: 16' Pedal Main Tuba Horn
FNC7: 8' Pedal Diaphonic Diapason
FNC8: 16' Pedal Solo Tibia Clausa
FNC9: 16' Pedal Solo Clarinet
FNC10: 16' Pedal Main Gamba
FNC11: 16' Pedal Main Concert Flute
FNC12: 8' Pedal Solo English Horn
FNC13: 8' Pedal Solo Harmonic Tuba
FNC14: 8' Pedal Main Tuba Horn
FNC15: 8' Pedal Main Open Diapason
FNC16: 8' Pedal Solo Tibia Clausa
FNC17: 8' Pedal Main Tibia Clausa (Tibia Minor)
FNC18: 8' Pedal Solo Clarinet
FNC19: 8' Pedal Solo Oboe Horn
FNC20: 8' Great to Pedal
FNC21: 8' Pedal Solo Horn Diapason
FNC22: 8' Pedal Main Concert Flute
FNC23: 8' Pedal Main Concert Flute Celeste
FNC24: 16' Pedal Piano
FNC25: 8' Pedal Piano
FNC26: Pedal Tap Cymbal #2
FNC27: Pedal Cymbal Roll
FNC28: Pedal Brush Cymbal
FNC29: Pedal Tap Cymbal
FNC30: Pedal Bass Drum
FNC31: Pedal Kettle Drum
FNC32: 8' Accomp to Pedal
FNC33: 4' Great to Pedal
FNC34: 8' Accomp Solo Harmonic Tuba
FNC35: 8' Solo to Pedal
FNC36: 8' Accomp Solo Horn Diapason
FNC37: 8' Accomp Solo Saxophone
FNC38: 8' Accomp Solo String Celeste
FNC39: 8' Accomp Main Viole d'Orchestre
FNC40: 8' Accomp Main Viole d'Orchestre Celeste
FNC41: 8' Accomp Main Salicional Celeste
FNC42: 4' Accomp Solo Horn Diapason
FNC43: 16' Accomp Marimba Harp
FNC44: 16' Accomp 2T Marimba Harp
FNC45: 8' Accomp Marimba Harp
FNC46: 8' Accomp 2T Marimba Harp
FNC47: 8' Accomp Chrysoglott
FNC48: 8' Accomp 2T Chrysoglott
FNC49: 8' Accomp 2T Main Tuba Horn
FNC50: 8' Accomp Solo English Horn
FNC51: 8' Accomp Main Trumpet
FNC52: 8' Accomp Main Tuba Horn
FNC53: 8' Accomp Main Open Diapason
FNC54: 8' Accomp Main Tibia Clausa (Tibia Minor)

FNC List

FNC55:	8' Accomp Solo Lieblich Flute	FNC111:	8' Solo Solo Clarinet
FNC56:	8' Accomp Solo Clarinet	FNC112:	8' Solo Solo Kinura
FNC57:	4' Accomp Solo String Celeste	FNC113:	8' Solo Solo Orchestral Oboe
FNC58:	4' Accomp Main Viole d'Orchestre Celeste	FNC114:	8' Solo Main Musette
FNC59:	8' Accomp Solo Oboe Horn	FNC115:	8' Solo Solo Saxophone
FNC60:	8' Accomp Solo String	FNC116:	8' Solo Solo Quintadena
FNC61:	8' Accomp Main Gamba	FNC117:	8' Solo Main Vox Humana
FNC62:	8' Accomp Main Gamba Celeste	FNC118:	8' Solo Solo Vox Humana
FNC63:	8' Accomp Main Salicional	FNC119:	4' Solo Solo Tibia Clausa
FNC64:	8' Accomp Solo Quintadena	FNC120:	4' Solo Main Tibia Clausa (Tibia Minor)
FNC65:	8' Accomp Main Concert Flute	FNC121:	2-2/3' Solo Solo Tibia Clausa
FNC66:	8' Accomp Main Concert Flute Celeste	FNC122:	2' Solo Solo Tibia Clausa
FNC67:	8' Accomp Main Vox Humana	FNC123:	1-3/5' Solo Solo Tibia Clausa
FNC68:	8' Accomp Solo Vox Humana	FNC124:	8' Solo Piano
FNC69:	4' Accomp Main Open Diapason	FNC125:	8' Solo Xylophone
FNC70:	4' Accomp Main Tibia Clausa (Tibia Minor)	FNC126:	8' Solo Glockenspiel
FNC71:	4' Accomp Solo Lieblich Flute	FNC127:	8' Solo Chimes
FNC72:	4' Accomp Solo String	FNC128:	16' Solo to Solo
FNC73:	4' Accomp Main Gamba	FNC129:	8' Solo unison off
FNC74:	4' Accomp Main Gamba Celeste	FNC130:	8' Accomp 2T Solo English Horn
FNC75:	4' Accomp Main Salicional	FNC131:	8' Accomp 2T Main Trumpet
FNC76:	4' Accomp Main Salicional Celeste	FNC132:	8' Accomp 2T Main Open Diapason
FNC77:	4' Accomp Main Concert Flute Celeste	FNC133:	8' Accomp 2T Solo Tibia Clausa
FNC78:	4' Accomp Main Vox Humana	FNC134:	8' Accomp 2T Solo Clarinet
FNC79:	4' Accomp Solo Vox Humana	FNC135:	4' Accomp 2T Solo Tibia Clausa
FNC80:	4' Accomp Main Concert Flute	FNC136:	8' Accomp 2T Piano
FNC81:	4' Accomp Main Viole d'Orchestre	FNC137:	4' Accomp 2T Piano
FNC82:	2' Accomp Main Concert Flute	FNC138:	4' Accomp 2T Glockenspiel
FNC83:	2-2/3' Accomp Main Concert Flute	FNC139:	8' Accomp 2T Chimes
FNC84:	8' Accomp Piano	FNC140:	4' Great to Accomp 2T
FNC85:	4' Accomp Piano	FNC141:	8' Solo to Accomp 2T
FNC86:	8' Accomp 2T Main Tibia Clausa (Tibia Minor)	FNC142:	8' Solo Solo Oboe Horn
FNC87:	4' Accomp 2T Main Tibia Clausa (Tibia Minor)	FNC143:	8' Solo Solo Horn Diapason
FNC88:	4' Accomp to Accomp	FNC144:	16' Bombarde Solo English Horn
FNC89:	8' Solo to Accomp	FNC145:	16' Bombarde Main Trumpet
FNC90:	Accomp Brush Cymbal	FNC146:	16' Bombarde Main Tuba Horn
FNC91:	Accomp Tap Cymbal #2	FNC147:	16' Bombarde Main Open Diapason
FNC92:	Accomp Snare Drum Roll	FNC148:	16' Bombarde Solo Tibia Clausa
FNC93:	Accomp Tom Tom	FNC149:	16' Bombarde Main Tibia Clausa (Tibia Minor)
FNC94:	Accomp Tambourine	FNC150:	16' Bombarde Solo Saxophone
FNC95:	Accomp Castanets	FNC151:	2-2/3' Solo Main Tibia Clausa (Tibia Minor)
FNC96:	Accomp Maracas	FNC152:	2' Solo Main Tibia Clausa (Tibia Minor)
FNC97:	Accomp Chinese Block	FNC153:	16' Bombarde Main Vox Humana
FNC98:	2-2/3' Accomp Solo Lieblich Flute	FNC154:	16' Bombarde Solo Vox Humana
FNC99:	2' Accomp Solo Lieblich Flute	FNC155:	8' Bombarde Solo English Horn
FNC100:	Accomp Triangle	FNC156:	8' Bombarde Solo Harmonic Tuba
FNC101:	Accomp Sleighbells Top G	FNC157:	8' Bombarde Main Trumpet
FNC102:	Accomp Sleighbells Top G#	FNC158:	8' Bombarde Main Tuba Horn
FNC103:	Accomp Sleighbells Top A	FNC159:	8' Bombarde Main Open Diapason
FNC104:	8' Solo Solo English Horn	FNC160:	8' Bombarde Solo Tibia Clausa
FNC105:	8' Solo Solo Harmonic Tuba	FNC161:	8' Bombarde Main Tibia Clausa (Tibia Minor)
FNC106:	8' Solo Main Trumpet	FNC162:	8' Bombarde Solo Saxophone
FNC107:	8' Solo Main Tuba Horn	FNC163:	8' Bombarde Main Vox Humana
FNC108:	8' Solo Main Open Diapason	FNC164:	8' Bombarde Solo Vox
FNC109:	8' Solo Solo Tibia Clausa	FNC165:	1-3/5' Solo Main Tibia Clausa (Tibia Minor)
FNC110:	8' Solo Main Tibia Clausa (Tibia Minor)	FNC166:	4' Bombarde Solo Tibia Clausa

FNC List

FNC167:	4' Bombarde Main Tibia Clausa (Tibia Minor)	FNC223:	8' Great Solo Quintadena
FNC168:	16' Solo Marimba Harp	FNC224:	8' Great Main Concert Flute
FNC169:	16' Solo Chrysoglott	FNC225:	8' Great Main Concert Flute Celeste
FNC170:	2-2/3' Bombarde Solo Tibia Clausa	FNC226:	8' Great Main Vox Humana
FNC171:	2-2/3' Bombarde Main Tibia Clausa (Tibia Minor)	FNC227:	8' Great Solo Vox Humana
FNC172:	2' Bombarde Solo Tibia Clausa	FNC228:	5-1/3' Great Solo Tibia Clausa
FNC173:	2' Bombarde Main Tibia Clausa (Tibia Minor)	FNC229:	4' Great Main Open Diapason
FNC174:	8' Bombarde Piano	FNC230:	4' Great Solo Tibia Clausa
FNC175:	16' Bombarde to Bombarde	FNC231:	4' Great Main Tibia Clausa (Tibia Minor)
FNC176:	4' Bombarde to Bombarde	FNC232:	4' Great Solo Lieblich Flute
FNC177:	8' Bombarde Xylophone	FNC233:	4' Great Solo String
FNC178:	8' Bombarde Glockenspiel	FNC234:	4' Great Main Gamba
FNC179:	8' Solo Sleighbells	FNC235:	4' Great Main Gamba Celeste
FNC180:	8' Bombarde Marimba Harp	FNC236:	4' Great Main Salicional
FNC181:	8' Bombarde Chrysoglott	FNC237:	3-1/5' Great Solo Tibia Clausa
FNC182:	8' Bombarde Chrysoglott	FNC238:	2-2/3' Great Solo Tibia Clausa
FNC183:	OLD Solo to Bombard Couplers	FNC239:	2-2/3' Great Main Tibia Clausa (Tibia Minor)
FNC184:	4' Solo to Solo	FNC240:	2' Great Main Concert Flute
FNC185:	16' Great to Bombarde	FNC241:	2' Great Solo Tibia Clausa
FNC186:	8' Great to Bombarde	FNC242:	2' Great Main Tibia Clausa (Tibia Minor)
FNC187:	8' Solo to Bombarde	FNC243:	2' Great Solo Lieblich Flute
FNC188:	6-2/5' Solo to Bombarde	FNC244:	1-3/5' Great Main Tibia Clausa (Tibia Minor)
FNC189:	5-1/3' Solo to Bombarde	FNC245:	1' Great Main Tibia Clausa (Tibia Minor)
FNC190:	4-4/7' Solo to Bombarde	FNC246:	16' Great Piano
FNC191:	4' Solo to Bombarde	FNC247:	8' Great Piano
FNC192:	16' Great Solo English Horn	FNC248:	4' Great Piano
FNC193:	16' Great Solo Harmonic Tuba	FNC249:	8' Great Xylophone
FNC194:	16' Great Main Trumpet	FNC250:	8' Great Glockenspiel
FNC195:	16' Great Main Tuba Horn	FNC251:	8' Great Marimba Harp
FNC196:	16' Great Main Open Diapason	FNC252:	8' Great Chrysoglott
FNC197:	16' Great Solo Tibia Clausa	FNC253:	[FM] 8' Solo to Great pizzicato
FNC198:	16' Great Main Tibia Clausa (Tibia Minor)	FNC254:	8' Great unison off
FNC199:	16' Great Solo Clarinet	FNC255:	4' Great to Great
FNC200:	16' Great Solo Orchestral Oboe	FNC256:	16' Solo to Great
FNC201:	16' Great Solo Saxophone	FNC257:	8' Solo to Great
FNC202:	16' Great Solo Oboe Horn	FNC258:	16' Great 2T Solo English Horn
FNC203:	16' Great Main Gamba	FNC259:	16' Great 2T Solo Harmonic Tuba
FNC204:	16' Great Main Vox Humana	FNC260:	8' Great 2T Solo English Horn
FNC205:	16' Great Solo Vox Humana	FNC261:	8' Great 2T Solo Harmonic Tuba
FNC206:	8' Great Solo English Horn	FNC262:	8' Solo to Great 2T
FNC207:	8' Great Solo Harmonic Tuba	FNC263:	8' Solo to Great pizzicato
FNC208:	8' Great Main Trumpet	FNC264:	8' Solo to Great pizzicato
FNC209:	8' Great Main Tuba Horn	FNC265:	Tremulant - Main Tibia Clausa (Tibia Minor)
FNC210:	8' Great Main Open Diapason	FNC266:	Tremulant - Tuba Horn
FNC211:	8' Great Solo Tibia Clausa	FNC267:	Tremulant - Diapason, Flute, Flte Celeste
FNC212:	8' Great Main Tibia Clausa (Tibia Minor)	FNC268:	Tremulant - Salicional & Celeste, Gamba & Celeste
FNC213:	8' Great Solo Lieblich Flute	FNC269:	Tremulant - Main Vox
FNC214:	8' Great Solo Clarinet	FNC270:	Tremulant - Harmonic Tuba
FNC215:	8' Great Solo Kinura	FNC271:	Tremulant - Solo Tibia Clausa
FNC216:	8' Great Solo Orchestral Oboe	FNC272:	Tremulant - Lieblich Flute
FNC217:	8' Great Solo Saxophone	FNC273:	Tremulants - Horn Dia, Oboe Horn, Clarinet
FNC218:	8' Great Solo Oboe Horn	FNC274:	Tremulant - Saxophone
FNC219:	8' Great Solo String	FNC275:	Tremulant - Solo Vox
FNC220:	8' Great Main Salicional	FNC276:	Tremulant - Musette, Trumpet
FNC221:	8' Great Main Gamba Celeste	FNC277:	Tremulant - Quint, Solo String & Celeste
FNC222:	8' Great Main Gamba	FNC278:	Tremulant - Kinura, Orchestral Oboe

FNC List

FNC279:	16' Great Solo Horn Diapason	FNC335:	M.S. 5
FNC280:	16' Great Solo Quintadena	FNC336:	M.S. 6
FNC281:	16' Great Main Concert Flute	FNC337:	M.S. 7
FNC282:	16' Great Main Concert Flute Celeste	FNC338:	M.S. 8
FNC283:	16' Great Solo Lieblich Flute	FNC339:	M.S. 9
FNC284:	8' Great Solo Horn Diapason	FNC340:	M.S. 10
FNC285:	8' Great Main Viole d'Orchestre	FNC341:	M.S. 11
FNC286:	8' Great Solo String Celeste	FNC342:	M.S. 12
FNC287:	8' Great Main Viole d'Orchestre Celeste	FNC343:	M.S. 13
FNC288:	8' Great Main Salicional Celeste	FNC344:	M.S. 14
FNC289:	New Crash Cymbal	FNC345:	M.S. 15
FNC290:	Train Whistle	FNC346:	M.S. 16
FNC291:	Bird Whistle	FNC347:	M.S. 17
FNC292:	Crash Cymbal	FNC348:	M.S. 18
FNC293:	Klaxon	FNC349:	M.S. 19
FNC294:	Air Raid Siren	FNC350:	M.S. 20
FNC295:	Horses Hooves	FNC351:	M.S. 21
FNC296:	Fire Bell	FNC352:	M.S. 22
FNC297:	8' Great Main Concert Flute Celeste	FNC353:	M.S. 23
FNC298:	4' Great Solo Horn Diapason	FNC354:	M.S. 24
FNC299:	4' Great Solo String Celeste	FNC355:	Crescendo Ind. 1
FNC300:	4' Great Main Salicional Celeste	FNC356:	Crescendo Ind. 2
FNC301:	4' Great Main Viole d'Orchestre	FNC357:	Crescendo Ind. 3
FNC302:	2-2/3' Great Solo Lieblich Flute	FNC358:	Crescendo Ind. 4
FNC303:	2' Great Main Viole d'Orchestre	FNC359:	Crescendo Ind. 5
FNC304:	4' Solo Chrysoglott	FNC360:	Crescendo Ind. 6
FNC305:	8' Accomp 2T Solo Harmonic Tuba	FNC361:	Crescendo Ind. 7
FNC306:	Great sostenuto	FNC362:	Crescendo Ind. 8
FNC307:	Solo Shutter 1	FNC363:	Crescendo Ind. 9
FNC308:	S.S. 2	FNC364:	Crescendo Ind. 10
FNC309:	S.S. 3	FNC365:	Solo Third
FNC310:	S.S. 4	FNC366:	Solo Fifth
FNC311:	S.S. 5	FNC367:	Solo Seventh
FNC312:	S.S. 6	FNC368:	12-4/5' Solo to Solo
FNC313:	S.S. 7	FNC369:	10-2/3' Solo to Solo
FNC314:	S.S. 8	FNC370:	16' Bombarde Solo Harmonic Tuba
FNC315:	S.S. 9	FNC371:	1' Bombarde Solo Tibia Clausa
FNC316:	S.S. 10	FNC372:	4' Great to Bombarde
FNC317:	S.S. 11	FNC373:	16' Solo to Bombarde
FNC318:	S.S. 12	FNC374:	Boat Whistle
FNC319:	S.S. 13	FNC375:	16' Great Main Musette
FNC320:	S.S. 14	FNC376:	8' Great Main Musette
FNC321:	S.S. 15	FNC377:	4' Accomp 2T Piano reiterate
FNC322:	S.S. 16	FNC378:	4' Accomp 2T Glockenspiel reiterate
FNC323:	S.S. 17	FNC379:	Crescendo I output #240
FNC324:	S.S. 18	FNC380:	Main output #255
FNC325:	S.S. 19	FNC381:	Solo output #255
FNC326:	S.S. 20	FNC382:	Crescendo Coupler to Crescendo I
FNC327:	S.S. 21	FNC383:	MIDI FUNCTION MULTIPLIER
FNC328:	S.S. 22	FNC384:	4' Accomp Marimba Harp
FNC329:	S.S. 23	FNC385:	4' Accomp Marimba Harp reiterate
FNC330:	S.S. 24	FNC386:	Pedal Mixt 1
FNC331:	Main Shutter 1	FNC387:	Pedal Mixt 2
FNC332:	M.S. 2	FNC388:	Pedal Mixt 3
FNC333:	M.S. 3	FNC389:	Pedal Mixt 4
FNC334:	M.S. 4	FNC390:	Pedal Mixt 5

FNC List

FNC391:	Pedal Mixt 6	FNC447:	Steam Whistle 3
FNC392:	Accomp Mixt 1	FNC448:	Steam Whistle 4
FNC393:	Accomp Mixt 2	FNC449:	Steam Whistle 5
FNC394:	Accomp Mixt 3	FNC450:	Steam Whistle 6
FNC395:	Accomp Mixt 4	FNC451:	Steam Whistle 7
FNC396:	Accomp Mixt 5	FNC452:	Steam Whistle 8
FNC397:	Accomp Mixt 6	FNC453:	Steam Whistle 9
FNC398:	Great Mixt 1	FNC454:	Steam Whistle 10
FNC399:	Great Mixt 2	FNC455:	Steam Whistle 11
FNC400:	Great Mixt 3	FNC456:	Steam Whistle 12
FNC401:	Great Mixt 4	FNC457:	Steam Whistle 13
FNC402:	Great Mixt 5	FNC458:	Steam Whistle 14
FNC403:	Great Mixt 6	FNC459:	Steam Whistle 15
FNC404:	Great 1' Fife (FLUTE)	FNC460:	Steam Whistle 16
FNC405:	Accomp 2T Brush Cymbal	FNC461:	Piano Spotlight
FNC406:	Accomp 2T Tap Cymbal #2	FNC462:	Solo MIDI
FNC407:	Accomp Snare Drum 2T	FNC463:	Bombarde MIDI
FNC408:	Accomp 2T Tom Tom	FNC464:	Great MIDI
FNC409:	Accomp 2T Tambourine	FNC465:	Accomp MIDI
FNC410:	Accomp 2T Castanets	FNC466:	Pedal MIDI
FNC411:	Accomp 2T Maracas	FNC467:	Pedal Mixture
FNC412:	Accomp 2T Chinese Block	FNC468:	Accomp Mixture
FNC413:	Accomp 2T Triangle	FNC469:	Great Mixture
FNC414:	Accomp Sleigh Bells Top G 2T	FNC470:	Strony 32' Part 1
FNC415:	Accomp Sleigh Bells top G# 2T	FNC471:	Strony 32' Part 2
FNC416:	Accomp Sleigh Bells top A 2T	FNC472:	Carillon (Bombarde)
FNC417:	Accomp Snare Activate 2T	FNC473:	Prize Fight Gong
FNC418:	32' Pedal Main Open Diapason	FNC474:	Steam Whistle Part 1
FNC419:	16' Pedal Main Open Diapason	FNC475:	Steam Whistle Part 2
FNC420:	Pedal 12 4/5 Diaphone	FNC476:	-----
FNC421:	Pedal 10 2/3 Diaphone	FNC477:	8' Accomp 2T Tibias (2 ranks)
FNC422:	Pedal Resultant A# Diaphone	FNC478:	4' Accomp 2T Tibias (2 ranks)
FNC423:	Pedal Resultant D Diapason	FNC479:	Tremulants - Tibias / Lieblich Flute
FNC424:	Pedal 6 2/5 Diapason	FNC480:	Tremulants - Voxes
FNC425:	Pedal 5 1/3 Diapason	FNC481:	Tremulants for Solo I
FNC426:	Pedal 4' Diapason	FNC482:	Tremulants for Main 2 Stop
FNC427:	Pedal 32' Tibia Clausa	FNC483:	Main and Solo outputs #255
FNC428:	Pedal 16' Tibia Clausa (for Resultant)	FNC484:	Tremulant - VDO & Celeste
FNC429:	Pedal 10 2/3' Tibia Clausa (for Resultant)	FNC485:	16' Great to Great
FNC430:	Pedal 32' Tuba Horn	FNC486:	16' Great Main Salicional
FNC431:	Pedal 16' Tuba Horn	FNC487:	16' Great Main Salicional Celeste
FNC432:	Pedal 10 2/3 Tuba Horn	FNC488:	16' Great Main Viole d'Orchestre
FNC433:	Solo to Great Mel Coupler 16' AUTO OFF!!!	FNC489:	16' Great Main Viole d'Orchestre Celeste
FNC434:	Solo to Great Mel Coupler 8' AUTO OFF!!!	FNC490:	16' Great Main Gamba
FNC435:	Solo to Great Mel Coupler 16' AUTO	FNC491:	16' Great Main Gamba Celeste
FNC436:	Solo to Great Mel Coupler 8' AUTO	FNC492:	16' Great Solo String
FNC437:	Bomb Chrys Minor 3rd	FNC493:	16' Great Solo String Celeste
FNC438:	Bombarde Chrys 4th	FNC494:	8' Solo Main Salicional
FNC439:	Bomb Chrys 2 2/3	FNC495:	8' Solo Main Salicional Celeste
FNC440:	Bombarde 2' Chrys	FNC496:	8' Solo Main Viole d'Orchestre
FNC441:	Prize Fight Gong 1	FNC497:	8' Solo Main Viole d'Orchestre Celeste
FNC442:	Prize Fight Gong 2	FNC498:	8' Solo Main Gamba
FNC443:	Prize Fight Gong 3	FNC499:	8' Solo Main Gamba Celeste
FNC444:	Prize Fight Gong 4	FNC500:	8' Solo Solo String
FNC445:	Steam Whistle 1	FNC501:	8' Solo Solo String Celeste
FNC446:	Steam Whistle 2	FNC502:	16' Bombarde Main Salicional

FNC List

FNC503:	16' Bombarde Main Salicional Celeste	FNC559:	8' Great Marimba Harp reiterate
FNC504:	16' Bombarde Main Viole d'Orchestre	FNC560:	8' Great Xylophone reiterate
FNC505:	16' Bombarde Main Viole d'Orchestre Celeste	FNC561:	8' Great Glockenspiel reiterate
FNC506:	16' Bombarde Main Gamba	FNC562:	8' Bombarde Marimba Harp reiterate
FNC507:	16' Bombarde Main Gamba Celeste	FNC563:	8' Bombarde Xylophone reiterate
FNC508:	16' Bombarde Solo String	FNC564:	8' Bombarde Glockenspiel reiterate
FNC509:	16' Bombarde Solo String Celeste	FNC565:	New Crash Cymbal
FNC510:	8' Bombarde Main Salicional	FNC566:	Accomp Sand Block
FNC511:	8' Bombarde Main Salicional Celeste	FNC567:	32' Tibia Resultant reverser
FNC512:	8' Bombarde Main Viole d'Orchestre	FNC568:	5-1/3' Pedal Diaphonic Diapason
FNC513:	8' Bombarde Main Viole d'Orchestre Celeste	FNC569:	4' Pedal Diaphonic Diapason
FNC514:	8' Bombarde Main Gamba	FNC570:	Relative transposer +1
FNC515:	8' Bombarde Main Gamba Celeste	FNC571:	Absolute transposer +0
FNC516:	8' Bombarde Solo String	FNC572:	Relative transposer -1
FNC517:	8' Bombarde Solo String Celeste	FNC573:	16' Pedal Piano pizzicato
FNC518:	4' Bombarde Main Salicional	FNC574:	8' Pedal Piano pizzicato
FNC519:	4' Bombarde Main Salicional Celeste	FNC575:	8' Accomp Piano pizzicato
FNC520:	4' Bombarde Main Viole d'Orchestre	FNC576:	8' Accomp 2T Piano pizzicato
FNC521:	4' Bombarde Main Viole d'Orchestre Celeste	FNC577:	4' Accomp Piano pizzicato
FNC522:	4' Bombarde Main Gamba	FNC578:	4' Accomp 2T Piano pizzicato
FNC523:	4' Bombarde Main Gamba Celeste	FNC579:	8' Solo Piano pizzicato
FNC524:	4' Bombarde Solo String	FNC580:	16' Great Piano pizzicato
FNC525:	4' Bombarde Solo String Celeste	FNC581:	8' Great Piano pizzicato
FNC526:	8' Pedal Main Salicional	FNC582:	4' Great Piano pizzicato
FNC527:	8' Pedal Main Salicional Celeste	FNC583:	8' Bombarde Piano pizzicato
FNC528:	8' Pedal Main Viole d'Orchestre	FNC584:	Piano PIZ above to stop magnet burnouts
FNC529:	8' Pedal Main Viole d'Orchestre Celeste		
FNC530:	8' Pedal Main Gamba		
FNC531:	8' Pedal Main Gamba Celeste		
FNC532:	8' Pedal Solo String		
FNC533:	8' Pedal Solo String Celeste		
FNC534:	4' Great Main Viole d'Orchestre Celeste		
FNC535:	10 2/3 Pedal Bourdon (for Resultant)		
FNC536:	16' Pedal Main Concert Flute (for resultant)		
FNC537:	Accomp Snare Activate		
FNC538:	Kettle Drum		
FNC539:	32' Wood Diaphone (for Resultant)		
FNC540:	16' Pedal Wood Diaphone (for Resultant)		
FNC541:	10 2/3' Pedal Wood Diaphone (for Resultant)		
FNC542:	Tremulants for Solo II		
FNC543:	Cymbal Roll		
FNC544:	Snare Drum Roll #2		
FNC545:	Great IV Mixture (New) 1		
FNC546:	Great IV Mixture (New) 2		
FNC547:	Great IV Mixture (New) 3		
FNC548:	Great IV Mixture (New) 4		
FNC549:	Great IV Mixture (New) 5		
FNC550:	Great IV Mixture (New) 6		
FNC551:	Great IV Mixture (New) 7		
FNC552:	Great IV Mixture (New) 8		
FNC553:	Great IV Mixture (New) 9		
FNC554:	8' Accomp Marimba Harp reiterate		
FNC555:	16' Accomp Marimba Harp reiterate		
FNC556:	16' Solo Marimba Harp reiterate		
FNC557:	8' Solo Xylophone reiterate		
FNC558:	8' Solo Glockenspiel reiterate		

Capri Rank Fix

Changes to play pre December 1995 Definition Files (revised 9/99)

Rank No:	RNK Name:	Change from:	Action:	Comment:
4	Main Musette		Rename rank	
5	Main Salicional	8' bottom C	AF-B5(73)	New output board
6	Main Gamba Celeste	8' bottom C	AE-B5(73) Rename rank	Was Main String Celeste
7	Main Tibia Clausa	16' bottom C 8' C#	AJ-J7(13) AG-B5(84)	New bottom octave. + shifted one note. Delete top 12 notes if there.
8	Main Tuba Horn	4' C#	AH-J2(12)	Adds top octave
9	Main Gamba	8' C one octave up 2' C 2' C# 1' C	AI-E5(60) AH-L8 AD-K6(11) AE-L8 Rename rank	Real messy fix
15	Solo Lieblich Flute		Rename rank	
19	Solo String	8' bottom C	BP-B5(73)	Mainly on pre '91 def files
20	Solo Tibia Clausa	32' bottom C 1' C#	delete delete to end	Only on some def files
23	Chrysaglott	8' bottom G	Delete up to 8' Bot G AL-A8(49)	Shifted several notes
24	Marimba	8' bottom C 8" Top G#	CD-A1(49) delete from 8' top C# Delete to end	Changed output board
25	Piano	16' bottom C	AN-A4(85)	Pre '91 only?
26	Chimes	8' G one octave up 8' C#4	Delete to 8' G one octave up then: BM-A1(18) BM-G2(7)	
30	Diaphonic Diapason	16' bottom C	AM-A1(44) Delete from 8' middle G# to end Rename rank	Not on early defs
32	Main VDO		Bot 8' AI-D1(12) Then AO-D1(61) Then from 2' C# AD-K6(12)	Check the 3 different address prefixes

Capri Tremulants

CAPRI – Tremulant stops and what they control:

STP 179 Harmonic tuba	Harmonic Tuba
STP 180 Vibraphone	Not used
STP 252 Tibias, Lieblich flute	Main Tibia, Solo Tibia, Lieblich Flute
STP 264 Voxes	Main Vox, Solo Vox, Saxophone
STP 265 Solo I	Kinura, Orchestral Oboe, Horn Diapason, Oboe Horn, Clarinet
STP 266 Solo II	Quint, Solo String, Solo String Celeste
STP 267 Main I	Musette, Trumpet
STP 268 Main II	Diapason, Flute, Flute Celeste, VDO and Celeste, Salicional and Celeste, Gamba and Celeste
STP 269 Tuba Horn	Tuba Horn

Changing Piano to Pizzicato

STP	LNK	ORIG FNC	PIZ FNC
25 Pedal 16' and 8'	59 (light)	476 (FNC 24 and 25)	573, 574
78 Accomp 8'	12 8' Accomp 13 8' Accomp 2T 57 4' Accomp 2T Reit 59 (light)	84 136 377 (can't be changed to PIZ)	575 576
79 Accomp 4'	14 4' Accomp 15 4' Accomp 2T 59 (light)	85 137	577 578
112 Solo 8'	59 (light)	124	579
256 Great 16'	59 (light)	246	580
257 Great 8'	60 (light)	247	581
258 Great 4'	60 (light)	248	582
263 Bombarde 8	59 (light)	174	583

Basically to make a Stop work as a Pizzicato you define a set of timings for the Pizzicato – (see a PIZ in the definition file editor) and then make a new function of type 13 for **each** function you want to modify. Just put the original FNC number to modify in the new FNC and the PIZ number to set the timing. It is obvious when you see the FNC 13 parameters. The new FNC are then defined in a link with the original FNC as well. You need to also delete the FNC tied directly to a STP on the STP definition page.

1. Define PIZ 5 as Piano Pizzicato (you could use any of the other pizzicatos but if you change the timings it will affect the other voices using that pizzicato timing).
2. Timing value will be about 120 but can be experimented with. The number represents milliseconds.
3. Add some new functions if there are not enough. Command is /ADD x where X is the number of functions you want added. You need about 12 but this includes 2T piano stops that aren't actually used. These are listed in the above table.
4. Make each new FNC a type 13 (Pizzicato modifier).
5. Make one of these FNC's for each of the FNC's in the above table.
6. If the timing is too long or short modify the timing in PIZ 5 parameters and this will fix all of the piano pizzicato timings. The easiest way to change the lot is to move the cursor to the first note in the PIZ box and type

XXX(128)

where xxx is the timing value. The 128 in the brackets mean that each of the 128 notes available will be changed to the new value automatically.

Changing Piano to Pizzicato

Remaining changes to make

STP	DELETE from STP Parameters	LNK	ALGORITHM	FNC on LNK
25	FNC 476	Edit LNK 87 Rename to 16' and 8' Pedal Piano	As previous	573, 574, 24, 25
78		Edit LNK 12 Edit LNK 13	As previous As previous	575, 84 576, 136
79		Edit LNK 14 Edit LNK 15	As previous As previous	577, 85 578, 137
112	FNC 124	Add LNK 88	S 112	579, 124
256	FNC 246	Add LNK 89	S256	580, 246
257	FNC 247	Add LNK 90	S257	581, 247
258	FNC 248	Add LNK 91	S258	582, 248
S263	FNC 174	Add LNK 92	S263	583, 174

Note – put FNC's on LNK in order given above to get correct name in the link to indicate it is Pizzicato. It will work whatever the order but the name makes it easier when looking through the definition file later.

Pitch Offsets

32'	-24
21 1/3'	-17
16'	-12
12 4/5'	-8
10 2/3'	-5
9 1/7'	-2
8'	0
6 2/5'	+4
5 1/3'	+7
4 4/7'	+10
4'	+12
3 1/5	+16
2 2/3'	+19
2 2/7'	+22
2'	+24
1 3/5'	+28
1 1/3'	+31
1 1/7'	+34
1'	+36
4/5'	+40
2/3'	+43
4/7'	+46
1/2'	+48

Unit Addresses and Details

UNT1:	Brush Cymbal	AL-H1	Controlled output 60mS
UNT2:	Tap Cymbal	AL-H2	Controlled output 65mS
UNT3:	Tap Cymbal #2	AL-H3	Controlled output 60mS
UNT4:	Cymbal Roll	AL-H4	Reit output 90mS Duty cycle (DC)7
UNT5:	Snare Drum Roll	AL-H8	Reit output 60mS DC 2
UNT6:	Snare Drum Roll #2	AL-H6	Reit output 65mS DC 4
UNT7:	Snare Drum	AL-H7	Normal output
UNT8:	Tom Tom	AL-H8	Controlled output 60mS
UNT9:	Tambourine	AL-I1	Reit output 70mS DC 3
UNT10:	Castanets	AL-I2	Reit output 90mS DC 5
UNT11:	Maracas	AL-I3	Reit output 90ms DC 2
UNT12:	Sand Block	AL-I4	Normal output
UNT13:	Chinese Block	AL-I5	Controlled output 60mS
UNT14:	Crash Cymbal	AL-I6	Controlled output 120mS
UNT15:	Boat Whistle	AL-J5	Normal output
UNT16:	Bird Whistle	AL-I8	Normal output
UNT17:	Horses Hooves	AL-J1	Reit output 80mS DC 5
UNT18:	Surf	AL-J2	Normal output
UNT19:	Fire Bell	AL-J3	Normal output
UNT20:	Telephone Bell	AL-J4	Normal output
UNT21:	Train Whistle	AL-I7	Normal output
UNT22:	Triangle	AL-J6	Controlled output 60mS
UNT23:	Piano Sustain	AN-K8	Normal output
UNT24:	Ding Dong	BM-C3	Normal output
UNT25:	Bass Drum	BN-F1	Controlled output 60mS
UNT26:	Kettle Drum	BN-F2	normal output
UNT27:	Air Raid Siren	BN-F3	Normal output
UNT28:	Klaxon	BN-F4	normal output
UNT29:	Solo Shutter 1	BO-A1	normal output until noted
UNT30:	S.S. 2	BO-A2	
UNT31:	S.S. 3	BO-A3	
UNT32:	S.S. 4	BO-I1	
UNT33:	S.S. 5	BO-B1	
UNT34:	S.S. 6	BO-B2	
UNT35:	S.S. 7	BO-B3	
UNT36:	S.S. 8	BO-J1	
UNT37:	S.S. 9	BO-C1	
UNT38:	S.S. 10	BO-C2	
UNT39:	S.S. 11	BO-K1	
UNT40:	S.S. 12	BO-K2	
UNT41:	S.S. 13	BO-D1	
UNT42:	S.S. 14	BO-D2	
UNT43:	S.S. 15	BO-L1	
UNT44:	S.S. 16	BO-L2	
UNT45:	S.S. 17	BO-E1	

Unit Addresses and Details

UNT46:	S.S. 18	BO-E2
UNT47:	S.S. 19	BO-E3
UNT48:	S.S. 20	BO-I2
UNT49:	S.S. 21	BO-F1
UNT50:	S.S. 22	BO-F2
UNT51:	S.S. 23	BO-F3
UNT52:	S.S. 24	BO-J2
UNT53:	Tremulant - Harmonic Tuba	BO-G1
UNT54:	Tremulant - Solo Tibia Clausa	BO-G2
UNT55:	Tremulant - Lieblich Flute	BO-K3
UNT56:	Tremulants - Horn Dia,	BO-H1
UNT57:	Tremulant - Saxophone	BO-H2
UNT58:	Tremulant - Solo Vox	BO-L3
UNT59:	Tremulant - VDO & Celeste	AK-J3
UNT65:	Main Shutter 1	AK-A1
UNT66:	M.S. 2	AK-A2
UNT67:	M.S. 3	AK-A3
UNT68:	M.S. 4	AK-I1
UNT69:	M.S. 5	AK-B1
UNT70:	M.S. 6	AK-B2
UNT71:	M.S. 7	AK-B3
UNT72:	M.S. 8	AK-J1
UNT73:	M.S. 9	AK-C1
UNT74:	M.S. 10	AK-C2
UNT75:	M.S. 11	AK-K1
UNT76:	M.S. 12	AK-K2
UNT77:	M.S. 13	AK-D1
UNT78:	M.S. 14	AK-D2
UNT79:	M.S. 15	AK-L1
UNT80:	M.S. 16	AK-L2
UNT81:	M.S. 17	AK-E1
UNT82:	M.S. 18	AK-E2
UNT83:	M.S. 19	AK-E3
UNT84:	M.S. 20	AK-I2
UNT85:	M.S. 21	AK-F1
UNT86:	M.S. 22	AK-F2
UNT87:	M.S. 23	AK-F3
UNT88:	M.S. 24	AK-J2
UNT89:	Tremulant - Diapason, Flute,	AK-G1
UNT90:	Tremulant - Salicional & Celeste,	AK-G2
UNT91:	Tremulant - Main Vox	AK-K3
UNT92:	Tremulant - Tuba Horn	AK-H1
UNT93:	Tremulant - Main Tibia Clausa	AK-H2
UNT94:	Tremulant - Kinura, Orchestral Oboe	BO-J3

Unit Addresses and Details

UNT107:	Crescendo Ind. 1	AF-I1
UNT108:	Crescendo Ind. 2	AF-I3
UNT109:	Crescendo Ind. 3	AF-I5
UNT110:	Crescendo Ind. 4	AF-I7
UNT111:	Crescendo Ind. 5	AF-J1
UNT112:	Crescendo Ind. 6	AF-J4
UNT113:	Crescendo Ind. 7	AF-J7
UNT114:	Crescendo Ind. 8	AK-K2
UNT115:	Crescendo Ind. 9	AF-K3
UNT116:	Crescendo Ind. 10	AF-K4
UNT127:	PIANO PUMP - NO USE AT CAPRI	
UNT128:	Snare Activate	AL-J8
UNT129:	Cheek Button 7	BO-J7
UNT130:	Cheek Button 8	BO-J8
UNT131:	Tom Tom Re-it (used for Snare	AL-H8 Reit output 60mS DC 2
UNT132:	Reiterating Tambourine	AL-I8 Reit output 1mS DC 8
UNT133:	Sleighbells Top G	BM-J8 Controlled output 60mS
UNT134:	Sleighbells Top G#	BM-K1 Controlled output 60mS
UNT135:	Sleighbells Top A	BM-K2 Controlled output 60mS
UNT136:	Tremulant - Musette, Trumpet	AK-G3 Normal output
UNT137:	Tremulant - Quint,	BO-I3
UNT138:	Sand Block	AL-J2
UNT139:		
UNT140:	Prize Fight Gong 1	BM-A8
UNT141:	Prize Fight Gong 2	BM-B3
UNT142:	Prize Fight Gong 3	BM-B6
UNT143:	Prize Fight Gong 4	BM-C1
UNT144:	Steam Whistle 1	AA-G7
UNT145:	Steam Whistle 2	AA-H2
UNT146:	Steam Whistle 3	AA-H5
UNT147:	Steam Whistle 4	AA-H8
UNT148:	Steam Whistle 5	AG-G7
UNT149:	Steam Whistle 6	AG-H2
UNT150:	Steam Whistle 7	AG-H5
UNT151:	Steam Whistle 8	AG-H8
UNT152:	Steam Whistle 9	AB-G7
UNT153:	Steam Whistle 10	AB-H2
UNT154:	Steam Whistle 11	AB-H5
UNT155:	Steam Whistle 12	AB-H8
UNT156:	Steam Whistle 13	AB-I1
UNT157:	Steam Whistle 14	AB-I6
UNT158:	Steam Whistle 15	AB-J1
UNT159:	Steam Whistle 16	AB-J4
UNT160:	Piano Spotlight	AN-L2

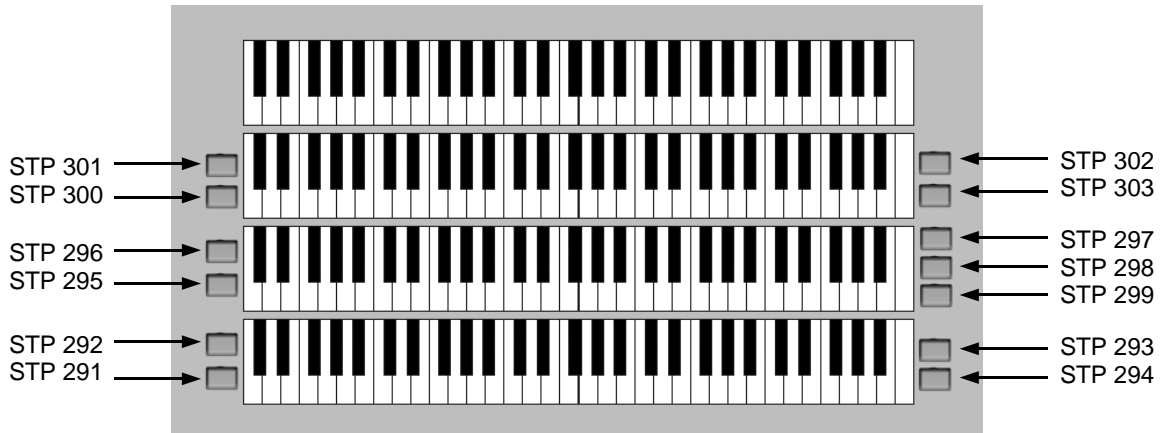
Changes to add Cheek Buttons - July 2002

Create Direct Unit Outputs: (FNC Type 5)		
FNC 587	Chinese Block (UNT 13)	
FNC 588	Telephone Bell (UNT 20)	
FNC 589	Bass Drum (UNT 25)	
FNC 590	Snare Activate (UNT 128)	
FNC 591	Snare Drum Roll (UNT 5)	
FNC 592	Tom Tom (UNT 8)	
FNC 593	New Crash Cymbal	Unt 14
Add LNK 75	Snare Drum Roll	FNC 590, 591
Add LNK 94	Steam Whistle	FNC 474, 475
Change UNT 20 output address	From AL-J4 to BN-F5	Telephone Bell

Create STP's: Make STP's INACTIVE on combination.	Cheek Button:	FNC or LNK to activate
291 AG-O7	Accomp 1	FNC 593 Crash Cymbal
292 AG-O8	Accomp 2	FNC 543 Cymbal Roll
293 AG-P1	Accomp 3	FNC 538 Bass Drum Roll (Kettle Drum)
294 AG-P2	Accomp 4	FNC 589 Bass Drum
295 AG-P3	Great 5	FNC 291 Bird Whistle
296 AG-P4	Great 6	FNC 587 Chinese Block
297 - add debounce 150 AG-P5	Great 7 (Transpose -1)	FNC 572
298 - add debounce 150 AG-P6	Great 8 (Transpose Neutral)	FNC 571
299 - add debounce 150 AG-P7	Great 9 (Transpose +1)	FNC 570
300 AG-P8	Bombarde 10	LNK 75 (Alg S300) Snare Drum Roll
301 AG-H1	Bombarde 11	FNC 296 Fire Bell
302 AG-H2	Bombarde 12	FNC 588 Telephone Bell
303 AG-H3	Bombarde 13	FNC 293 Klaxon

Create UNITS for Transpose counter	UNT Name	LNK to create
UNT 161 & FNC 595 FNC type 5 AF-K6	Transpose Counter +1	LNK 95 (algorithm S299) FNC 595
UNT 162 & FNC 596 FNC type 5 AF-K7	Transpose Counter Normal (0)	LNK 96 (algorithm S298) FNC 596
UNT 163 & FNC 597 FNC type 5 AF-K8	Transpose Counter -1	LNK 97 (algorithm S297) FNC 597

Changes to add Cheek Buttons - July 2002



Capri Cheek Button STP Numbers

Capri Crescendo

Stage	Great	Accomp	Pedal
1			
2	217 Salicionals 8 221 Lieblich Flute 8	57 Concert Flutes 8	10 Bourdon 16 24 Concert Flutes 8
3	156 Clarinet 8 218 Oboe Horn 8 233 Lieblich Flute 4	50 Salicional 8 56 Quintadena 8	
4	216 VDO 8 228 Piccolo 4	68 Concert Flutes 4	
5	215 Gambas 8	55 Oboe Horn 8	9 Violone 16
6	206 Horn Diapason 8 208 Tibia Clausa 8 227 Piccolo 4 232 Salicets 4	49 VDO 8	7 Tibia Clausa 16
7	196 Quintadena 16 197 Bourdon 16 157 Saxophone 8 231 Violes 4	43 Horn Diapason 8	5 Bass 16
8	194 String Ensemble II 16 230 Gambettes 4	67 Salicets 4	19 Tibia Clausa 8
9	207 Tibia Clausa 8	66 Violes 4	17 Horn Diapason 8
10	188 Tibia Clausa 16 191 Clarinet 16 193 String Ensemble I 16		
11	186 Horn Diapason 16 214 Solo Strings 8 242 Lieblich Piccolo 2	42 Open Diapason 8	6 Tibia Clausa 16
12	185 Bass 16 187 Tibia Clausa 16 239 Piccolo 2	65 Gambettes 4	18 Tibia Clausa 8
13	205 Open Diapason 8 229 Solo Strings 4 238 Piccolo 2	48 Gambas 8	
14	184 Ophicleide 16 189 Orchestral Oboe 16	41 Tuba Horn 8 47 Solo Strings 8	4 Diaphone 16 16 Open Diapason 8
15	106 Tuba Profunda 16 204 Tuba Horn 8	64 Solo Strings 4 74 Piccolo 2	15 Diaph Diapason 8
16	105 Trumpet 16 192 Saxophone 16 203 Harm Tuba 8 155 Kinura 8 240 Fifteenth 2	40 Harm Tuba 8 44 Tibia Clausa 8 62 Octave Horn 4	14 Tuba Horn 8
17	104 English Horn 16 202 Trumpet 8 226 Octave Horn 4	39 Trumpet 8 61 Octave 4	3 Ophicleide 16 13 Harm Tuba 8
18	201 English Horn 8	63 Piccolo 4	12 Trumpet 8
19	170 Great Octave	76 Accomp Octave 19	

Notes

Console Tab Layout

Console Tab Layout

Rank List

List produced by ORGTOOLS VERSION 2.62
 Correct rank list after full re-spec

RNK1: Main Open Diapason
 RNK2: Main Concert Flute
 RNK3: Main Concert Flute Celeste
 RNK4: Main Musette
 RNK5: Main Salicional
 RNK6: Main Gamba Celeste
 RNK7: Main Tibia Clausa (Tibia Minor)
 RNK8: Main Tuba Horn
 RNK9: Main Gamba
 RNK10: Main Vox Humana
 RNK11: Solo Clarinet
 RNK12: Solo English Horn
 RNK13: Solo Harmonic Tuba
 RNK14: Solo Kinura
 RNK15: Solo Lieblich Flute
 RNK16: Solo Oboe Horn
 RNK17: Solo Orchestral Oboe
 RNK18: Solo Quintadena
 RNK19: Solo String
 RNK20: Solo Tibia Clausa
 RNK21: Main Trumpet
 RNK22: Solo Vox Humana
 RNK23: Chrysoglott
 RNK24: Marimba Harp
 RNK25: Piano
 RNK26: Chimes
 RNK27: Glockenspiel
 RNK28: Sleighbells
 RNK29: Xylophone
 RNK30: Diaphonic Diapason
 RNK31: Solo String Celeste
 RNK32: Main Viole d'Orchestre
 RNK33: Main Viole d'Orchestre Celeste
 RNK34: Tibia Clausa (Clarabella)
 RNK35: Solo Horn Diapason
 RNK36: Solo Saxophone
 RNK37: Main Salicional Celeste
 RNK38: Spare
 RNK39: Spare
 RNK40: Spare
 RNK41: Spare
 RNK42: Spare
 RNK43: Spare
 RNK44: Spare
 RNK45: MIDI Rank 1 (Solo)
 RNK46: MIDI Rank 2 (Bombarde)
 RNK47: MIDI Rank 3 (Great)
 RNK48: MIDI Rank 4 (Accomp)
 RNK49: MIDI Rank 5 (Pedal)
 RNK50: Rank #50

Rank Addresses

Rank name: (RNK-1) Main Open Diapason

	32'	16'	-----8'-----				4'	2'	1'	
C	-----	AA-A1	AA-B5	AA-D1	AA-E5	AA-G1	AA-H5	AA-J1	AA-K5	AC-L8
C#	-----	AA-A2	AA-B6	AA-D2	AA-E6	AA-G2	AA-H6	AA-J2	AA-K6	-----
D	-----	AA-A3	AA-B7	AA-D3	AA-E7	AA-G3	AA-H7	AA-J3	AA-K7	-----
D#	-----	AA-A4	AA-B8	AA-D4	AA-E8	AA-G4	AA-H8	AA-J4	AA-K8	-----
E	-----	AA-A5	AA-C1	AA-D5	AA-F1	AA-G5	AA-I1	AA-J5	AA-L1	-----
F	-----	AA-A6	AA-C2	AA-D6	AA-F2	AA-G6	AA-I2	AA-J6	AA-L2	-----
F#	-----	AA-A7	AA-C3	AA-D7	AA-F3	AA-G7	AA-I3	AA-J7	AA-L3	-----
G	-----	AA-A8	AA-C4	AA-D8	AA-F4	AA-G8	AA-I4	AA-J8	AA-L4	-----
G#	-----	AA-B1	AA-C5	AA-E1	AA-F5	AA-H1	AA-I5	AA-K1	AA-L5	-----
A	-----	AA-B2	AA-C6	AA-E2	AA-F6	AA-H2	AA-I6	AA-K2	AA-L6	-----
A#	-----	AA-B3	AA-C7	AA-E3	AA-F7	AA-H3	AA-I7	AA-K3	AA-L7	-----
B	-----	AA-B4	AA-C8	AA-E4	AA-F8	AA-H4	AA-I8	AA-K4	AA-L8	-----

Rank name: (RNK-2) Main Concert Flute

	32'	16'	-----8'-----				4'	2'	1'	
C	-----	AB-A1	AB-B5	AB-D1	AB-E5	AB-G1	AB-H5	AB-J1	AB-K5	AC-K8
C#	-----	AB-A2	AB-B6	AB-D2	AB-E6	AB-G2	AB-H6	AB-J2	AB-K6	-----
D	-----	AB-A3	AB-B7	AB-D3	AB-E7	AB-G3	AB-H7	AB-J3	AB-K7	-----
D#	-----	AB-A4	AB-B8	AB-D4	AB-E8	AB-G4	AB-H8	AB-J4	AB-K8	-----
E	-----	AB-A5	AB-C1	AB-D5	AB-F1	AB-G5	AB-I1	AB-J5	AB-L1	-----
F	-----	AB-A6	AB-C2	AB-D6	AB-F2	AB-G6	AB-I2	AB-J6	AB-L2	-----
F#	-----	AB-A7	AB-C3	AB-D7	AB-F3	AB-G7	AB-I3	AB-J7	AB-L3	-----
G	-----	AB-A8	AB-C4	AB-D8	AB-F4	AB-G8	AB-I4	AB-J8	AB-L4	-----
G#	-----	AB-B1	AB-C5	AB-E1	AB-F5	AB-H1	AB-I5	AB-K1	AB-L5	-----
A	-----	AB-B2	AB-C6	AB-E2	AB-F6	AB-H2	AB-I6	AB-K2	AB-L6	-----
A#	-----	AB-B3	AB-C7	AB-E3	AB-F7	AB-H3	AB-I7	AB-K3	AB-L7	-----
B	-----	AB-B4	AB-C8	AB-E4	AB-F8	AB-H4	AB-I8	AB-K4	AB-L8	-----

Rank name: (RNK-3) Main Concert Flute Celeste

	32'	16'	-----8'-----				4'	2'	1'	
C	-----	-----	AC-B5	AC-D1	AC-E5	AC-G1	AC-H5	AC-J1	AC-K5	-----
C#	-----	-----	AC-B6	AC-D2	AC-E6	AC-G2	AC-H6	AC-J2	-----	-----
D	-----	-----	AC-B7	AC-D3	AC-E7	AC-G3	AC-H7	AC-J3	-----	-----
D#	-----	-----	AC-B8	AC-D4	AC-E8	AC-G4	AC-H8	AC-J4	-----	-----
E	-----	-----	AC-C1	AC-D5	AC-F1	AC-G5	AC-I1	AC-J5	-----	-----
F	-----	-----	AC-C2	AC-D6	AC-F2	AC-G6	AC-I2	AC-J6	-----	-----
F#	-----	-----	AC-C3	AC-D7	AC-F3	AC-G7	AC-I3	AC-J7	-----	-----
G	-----	-----	AC-C4	AC-D8	AC-F4	AC-G8	AC-I4	AC-J8	-----	-----
G#	-----	-----	AC-C5	AC-E1	AC-F5	AC-H1	AC-I5	AC-K1	-----	-----
A	-----	-----	AC-C6	AC-E2	AC-F6	AC-H2	AC-I6	AC-K2	-----	-----
A#	-----	-----	AC-C7	AC-E3	AC-F7	AC-H3	AC-I7	AC-K3	-----	-----
B	-----	-----	AC-C8	AC-E4	AC-F8	AC-H4	AC-I8	AC-K4	-----	-----

Rank Addresses

Rank name: (RNK-4) Main Musette

	32'	16'	-----8'-----				4'	2'	1'	
C	-----	-----	AD-B5	AD-D1	AD-E5	AD-G1	AD-H5	AD-J1	-----	-----
C#	-----	-----	AD-B6	AD-D2	AD-E6	AD-G2	AD-H6	-----	-----	-----
D	-----	-----	AD-B7	AD-D3	AD-E7	AD-G3	AD-H7	-----	-----	-----
D#	-----	-----	AD-B8	AD-D4	AD-E8	AD-G4	AD-H8	-----	-----	-----
E	-----	-----	AD-C1	AD-D5	AD-F1	AD-G5	AD-I1	-----	-----	-----
F	-----	-----	AD-C2	AD-D6	AD-F2	AD-G6	AD-I2	-----	-----	-----
F#	-----	-----	AD-C3	AD-D7	AD-F3	AD-G7	AD-I3	-----	-----	-----
G	-----	-----	AD-C4	AD-D8	AD-F4	AD-G8	AD-I4	-----	-----	-----
G#	-----	-----	AD-C5	AD-E1	AD-F5	AD-H1	AD-I5	-----	-----	-----
A	-----	-----	AD-C6	AD-E2	AD-F6	AD-H2	AD-I6	-----	-----	-----
A#	-----	-----	AD-C7	AD-E3	AD-F7	AD-H3	AD-I7	-----	-----	-----
B	-----	-----	AD-C8	AD-E4	AD-F8	AD-H4	AD-I8	-----	-----	-----

Rank name: (RNK-5) Main Salicional

	32'	16'	-----8'-----				4'	2'	1'	
C	-----	-----	AF-B5	AF-D1	AF-E5	AF-G1	AF-H5	AF-J1	AF-K5	-----
C#	-----	-----	AF-B6	AF-D2	AF-E6	AF-G2	AF-H6	AF-J2	-----	-----
D	-----	-----	AF-B7	AF-D3	AF-E7	AF-G3	AF-H7	AF-J3	-----	-----
D#	-----	-----	AF-B8	AF-D4	AF-E8	AF-G4	AF-H8	AF-J4	-----	-----
E	-----	-----	AF-C1	AF-D5	AF-F1	AF-G5	AF-I1	AF-J5	-----	-----
F	-----	-----	AF-C2	AF-D6	AF-F2	AF-G6	AF-I2	AF-J6	-----	-----
F#	-----	-----	AF-C3	AF-D7	AF-F3	AF-G7	AF-I3	AF-J7	-----	-----
G	-----	-----	AF-C4	AF-D8	AF-F4	AF-G8	AF-I4	AF-J8	-----	-----
G#	-----	-----	AF-C5	AF-E1	AF-F5	AF-H1	AF-I5	AF-K1	-----	-----
A	-----	-----	AF-C6	AF-E2	AF-F6	AF-H2	AF-I6	AF-K2	-----	-----
A#	-----	-----	AF-C7	AF-E3	AF-F7	AF-H3	AF-I7	AF-K3	-----	-----
B	-----	-----	AF-C8	AF-E4	AF-F8	AF-H4	AF-I8	AF-K4	-----	-----

Rank name: (RNK-6) Main Gamba Celeste

	32'	16'	-----8'-----				4'	2'	1'	
C	-----	-----	AE-B5	AE-D1	AE-E5	AE-G1	AE-H5	AE-J1	AE-K5	-----
C#	-----	-----	AE-B6	AE-D2	AE-E6	AE-G2	AE-H6	AE-J2	-----	-----
D	-----	-----	AE-B7	AE-D3	AE-E7	AE-G3	AE-H7	AE-J3	-----	-----
D#	-----	-----	AE-B8	AE-D4	AE-E8	AE-G4	AE-H8	AE-J4	-----	-----
E	-----	-----	AE-C1	AE-D5	AE-F1	AE-G5	AE-I1	AE-J5	-----	-----
F	-----	-----	AE-C2	AE-D6	AE-F2	AE-G6	AE-I2	AE-J6	-----	-----
F#	-----	-----	AE-C3	AE-D7	AE-F3	AE-G7	AE-I3	AE-J7	-----	-----
G	-----	-----	AE-C4	AE-D8	AE-F4	AE-G8	AE-I4	AE-J8	-----	-----
G#	-----	-----	AE-C5	AE-E1	AE-F5	AE-H1	AE-I5	AE-K1	-----	-----
A	-----	-----	AE-C6	AE-E2	AE-F6	AE-H2	AE-I6	AE-K2	-----	-----
A#	-----	-----	AE-C7	AE-E3	AE-F7	AE-H3	AE-I7	AE-K3	-----	-----
B	-----	-----	AE-C8	AE-E4	AE-F8	AE-H4	AE-I8	AE-K4	-----	-----

Rank Addresses

Rank name: (RNK-7) Main Tibia Clausa (Tibia Minor)

	32'	16'	-----8'-----				4'	2'	1'	
C	-----	AJ-J7	AJ-L3	AG-C8	AG-E4	AG-F8	AG-H4	AG-I8	AG-K4	AG-L8
C#	-----	AJ-J8	AG-B5	AG-D1	AG-E5	AG-G1	AG-H5	AG-J1	AG-K5	-----
D	-----	AJ-K1	AG-B6	AG-D2	AG-E6	AG-G2	AG-H6	AG-J2	AG-K6	-----
D#	-----	AJ-K2	AG-B7	AG-D3	AG-E7	AG-G3	AG-H7	AG-J3	AG-K7	-----
E	-----	AJ-K3	AG-B8	AG-D4	AG-E8	AG-G4	AG-H8	AG-J4	AG-K8	-----
F	-----	AJ-K4	AG-C1	AG-D5	AG-F1	AG-G5	AG-I1	AG-J5	AG-L1	-----
F#	-----	AJ-K5	AG-C2	AG-D6	AG-F2	AG-G6	AG-I2	AG-J6	AG-L2	-----
G	-----	AJ-K6	AG-C3	AG-D7	AG-F3	AG-G7	AG-I3	AG-J7	AG-L3	-----
G#	-----	AJ-K7	AG-C4	AG-D8	AG-F4	AG-G8	AG-I4	AG-J8	AG-L4	-----
A	-----	AJ-K8	AG-C5	AG-E1	AG-F5	AG-H1	AG-I5	AG-K1	AG-L5	-----
A#	-----	AJ-L1	AG-C6	AG-E2	AG-F6	AG-H2	AG-I6	AG-K2	AG-L6	-----
B	-----	AJ-L2	AG-C7	AG-E3	AG-F7	AG-H3	AG-I7	AG-K3	AG-L7	-----

Rank name: (RNK-8) Main Tuba Horn

	32'	16'	-----8'-----				4'	2'	1'	
C	-----	AH-A1	AH-B5	AH-D1	AH-E5	AH-G1	AH-H5	AH-J1	AH-K5	-----
C#	-----	AH-A2	AH-B6	AH-D2	AH-E6	AH-G2	AH-H6	AH-J2	-----	-----
D	-----	AH-A3	AH-B7	AH-D3	AH-E7	AH-G3	AH-H7	AH-J3	-----	-----
D#	-----	AH-A4	AH-B8	AH-D4	AH-E8	AH-G4	AH-H8	AH-J4	-----	-----
E	-----	AH-A5	AH-C1	AH-D5	AH-F1	AH-G5	AH-I1	AH-J5	-----	-----
F	-----	AH-A6	AH-C2	AH-D6	AH-F2	AH-G6	AH-I2	AH-J6	-----	-----
F#	-----	AH-A7	AH-C3	AH-D7	AH-F3	AH-G7	AH-I3	AH-J7	-----	-----
G	-----	AH-A8	AH-C4	AH-D8	AH-F4	AH-G8	AH-I4	AH-J8	-----	-----
G#	-----	AH-B1	AH-C5	AH-E1	AH-F5	AH-H1	AH-I5	AH-K1	-----	-----
A	-----	AH-B2	AH-C6	AH-E2	AH-F6	AH-H2	AH-I6	AH-K2	-----	-----
A#	-----	AH-B3	AH-C7	AH-E3	AH-F7	AH-H3	AH-I7	AH-K3	-----	-----
B	-----	AH-B4	AH-C8	AH-E4	AH-F8	AH-H4	AH-I8	AH-K4	-----	-----

Rank name: (RNK-9) Main Gamba

	32'	16'	-----8'-----				4'	2'	1'	
C	-----	AI-A1	AI-B5	AI-E5	AI-G1	AI-H5	AI-J1	AI-K5	AH-L8	AE-L8
C#	-----	AI-A2	AI-B6	AI-E6	AI-G2	AI-H6	AI-J2	AI-K6	AD-K6	-----
D	-----	AI-A3	AI-B7	AI-E7	AI-G3	AI-H7	AI-J3	AI-K7	AD-K7	-----
D#	-----	AI-A4	AI-B8	AI-E8	AI-G4	AI-H8	AI-J4	AI-K8	AD-K8	-----
E	-----	AI-A5	AI-C1	AI-F1	AI-G5	AI-I1	AI-J5	AI-L1	AD-L1	-----
F	-----	AI-A6	AI-C2	AI-F2	AI-G6	AI-I2	AI-J6	AI-L2	AD-L2	-----
F#	-----	AI-A7	AI-C3	AI-F3	AI-G7	AI-I3	AI-J7	AI-L3	AD-L3	-----
G	-----	AI-A8	AI-C4	AI-F4	AI-G8	AI-I4	AI-J8	AI-L4	AD-L4	-----
G#	-----	AI-B1	AI-C5	AI-F5	AI-H1	AI-I5	AI-K1	AI-L5	AD-L5	-----
A	-----	AI-B2	AI-C6	AI-F6	AI-H2	AI-I6	AI-K2	AI-L6	AD-L6	-----
A#	-----	AI-B3	AI-C7	AI-F7	AI-H3	AI-I7	AI-K3	AI-L7	AD-L7	-----
B	-----	AI-B4	AI-C8	AI-F8	AI-H4	AI-I8	AI-K4	AI-L8	AD-L8	-----

Rank Addresses

Rank name: (RNK-10) Main Vox Humana

	32'	16'	-----8'-----					4'	2'	1'
C	-----	-----	AJ-B5	AJ-D1	AJ-E5	AJ-G1	AJ-H5	AJ-J1	-----	-----
C#	-----	-----	AJ-B6	AJ-D2	AJ-E6	AJ-G2	AJ-H6	-----	-----	-----
D	-----	-----	AJ-B7	AJ-D3	AJ-E7	AJ-G3	AJ-H7	-----	-----	-----
D#	-----	-----	AJ-B8	AJ-D4	AJ-E8	AJ-G4	AJ-H8	-----	-----	-----
E	-----	-----	AJ-C1	AJ-D5	AJ-F1	AJ-G5	AJ-I1	-----	-----	-----
F	-----	-----	AJ-C2	AJ-D6	AJ-F2	AJ-G6	AJ-I2	-----	-----	-----
F#	-----	-----	AJ-C3	AJ-D7	AJ-F3	AJ-G7	AJ-I3	-----	-----	-----
G	-----	-----	AJ-C4	AJ-D8	AJ-F4	AJ-G8	AJ-I4	-----	-----	-----
G#	-----	-----	AJ-C5	AJ-E1	AJ-F5	AJ-H1	AJ-I5	-----	-----	-----
A	-----	-----	AJ-C6	AJ-E2	AJ-F6	AJ-H2	AJ-I6	-----	-----	-----
A#	-----	-----	AJ-C7	AJ-E3	AJ-F7	AJ-H3	AJ-I7	-----	-----	-----
B	-----	-----	AJ-C8	AJ-E4	AJ-F8	AJ-H4	AJ-I8	-----	-----	-----

Rank name: (RNK-11) Solo Clarinet

	32'	16'	-----8'-----					4'	2'	1'
C	-----	BA-A1	BA-B5	BA-D1	BA-E5	BA-G1	BA-H5	BA-J1	-----	-----
C#	-----	BA-A2	BA-B6	BA-D2	BA-E6	BA-G2	BA-H6	-----	-----	-----
D	-----	BA-A3	BA-B7	BA-D3	BA-E7	BA-G3	BA-H7	-----	-----	-----
D#	-----	BA-A4	BA-B8	BA-D4	BA-E8	BA-G4	BA-H8	-----	-----	-----
E	-----	BA-A5	BA-C1	BA-D5	BA-F1	BA-G5	BA-I1	-----	-----	-----
F	-----	BA-A6	BA-C2	BA-D6	BA-F2	BA-G6	BA-I2	-----	-----	-----
F#	-----	BA-A7	BA-C3	BA-D7	BA-F3	BA-G7	BA-I3	-----	-----	-----
G	-----	BA-A8	BA-C4	BA-D8	BA-F4	BA-G8	BA-I4	-----	-----	-----
G#	-----	BA-B1	BA-C5	BA-E1	BA-F5	BA-H1	BA-I5	-----	-----	-----
A	-----	BA-B2	BA-C6	BA-E2	BA-F6	BA-H2	BA-I6	-----	-----	-----
A#	-----	BA-B3	BA-C7	BA-E3	BA-F7	BA-H3	BA-I7	-----	-----	-----
B	-----	BA-B4	BA-C8	BA-E4	BA-F8	BA-H4	BA-I8	-----	-----	-----

Rank name: (RNK-12) Solo English Horn

	32'	16'	-----8'-----					4'	2'	1'
C	-----	-----	BB-B5	BB-D1	BB-E5	BB-G1	BB-H5	BB-J1	-----	-----
C#	-----	-----	BB-B6	BB-D2	BB-E6	BB-G2	BB-H6	-----	-----	-----
D	-----	-----	BB-B7	BB-D3	BB-E7	BB-G3	BB-H7	-----	-----	-----
D#	-----	-----	BB-B8	BB-D4	BB-E8	BB-G4	BB-H8	-----	-----	-----
E	-----	-----	BB-C1	BB-D5	BB-F1	BB-G5	BB-I1	-----	-----	-----
F	-----	-----	BB-C2	BB-D6	BB-F2	BB-G6	BB-I2	-----	-----	-----
F#	-----	-----	BB-C3	BB-D7	BB-F3	BB-G7	BB-I3	-----	-----	-----
G	-----	-----	BB-C4	BB-D8	BB-F4	BB-G8	BB-I4	-----	-----	-----
G#	-----	-----	BB-C5	BB-E1	BB-F5	BB-H1	BB-I5	-----	-----	-----
A	-----	-----	BB-C6	BB-E2	BB-F6	BB-H2	BB-I6	-----	-----	-----
A#	-----	-----	BB-C7	BB-E3	BB-F7	BB-H3	BB-I7	-----	-----	-----
B	-----	-----	BB-C8	BB-E4	BB-F8	BB-H4	BB-I8	-----	-----	-----

Rank Addresses

Rank name: (RNK-13) Solo Harmonic Tuba

	32'	16'	-----8'-----					4'	2'	1'
C	-----	-----	BC-B5	BC-D1	BC-E5	BC-G1	BC-H5	BC-J1	-----	-----
C#	-----	-----	BC-B6	BC-D2	BC-E6	BC-G2	BC-H6	-----	-----	-----
D	-----	-----	BC-B7	BC-D3	BC-E7	BC-G3	BC-H7	-----	-----	-----
D#	-----	-----	BC-B8	BC-D4	BC-E8	BC-G4	BC-H8	-----	-----	-----
E	-----	-----	BC-C1	BC-D5	BC-F1	BC-G5	BC-I1	-----	-----	-----
F	-----	-----	BC-C2	BC-D6	BC-F2	BC-G6	BC-I2	-----	-----	-----
F#	-----	-----	BC-C3	BC-D7	BC-F3	BC-G7	BC-I3	-----	-----	-----
G	-----	-----	BC-C4	BC-D8	BC-F4	BC-G8	BC-I4	-----	-----	-----
G#	-----	-----	BC-C5	BC-E1	BC-F5	BC-H1	BC-I5	-----	-----	-----
A	-----	-----	BC-C6	BC-E2	BC-F6	BC-H2	BC-I6	-----	-----	-----
A#	-----	-----	BC-C7	BC-E3	BC-F7	BC-H3	BC-I7	-----	-----	-----
B	-----	-----	BC-C8	BC-E4	BC-F8	BC-H4	BC-I8	-----	-----	-----

Rank name: (RNK-14) Solo Kinura

	32'	16'	-----8'-----					4'	2'	1'
C	-----	-----	BD-B5	BD-D1	BD-E5	BD-G1	BD-H5	BD-J1	-----	-----
C#	-----	-----	BD-B6	BD-D2	BD-E6	BD-G2	BD-H6	-----	-----	-----
D	-----	-----	BD-B7	BD-D3	BD-E7	BD-G3	BD-H7	-----	-----	-----
D#	-----	-----	BD-B8	BD-D4	BD-E8	BD-G4	BD-H8	-----	-----	-----
E	-----	-----	BD-C1	BD-D5	BD-F1	BD-G5	BD-I1	-----	-----	-----
F	-----	-----	BD-C2	BD-D6	BD-F2	BD-G6	BD-I2	-----	-----	-----
F#	-----	-----	BD-C3	BD-D7	BD-F3	BD-G7	BD-I3	-----	-----	-----
G	-----	-----	BD-C4	BD-D8	BD-F4	BD-G8	BD-I4	-----	-----	-----
G#	-----	-----	BD-C5	BD-E1	BD-F5	BD-H1	BD-I5	-----	-----	-----
A	-----	-----	BD-C6	BD-E2	BD-F6	BD-H2	BD-I6	-----	-----	-----
A#	-----	-----	BD-C7	BD-E3	BD-F7	BD-H3	BD-I7	-----	-----	-----
B	-----	-----	BD-C8	BD-E4	BD-F8	BD-H4	BD-I8	-----	-----	-----

Rank name: (RNK-15) Solo Lieblich Flute

	32'	16'	-----8'-----					4'	2'	1'
C	-----	-----	BE-B5	BE-D1	BE-E5	BE-G1	BE-H5	BE-J1	BE-K5	-----
C#	-----	-----	BE-B6	BE-D2	BE-E6	BE-G2	BE-H6	BE-J2	-----	-----
D	-----	-----	BE-B7	BE-D3	BE-E7	BE-G3	BE-H7	BE-J3	-----	-----
D#	-----	-----	BE-B8	BE-D4	BE-E8	BE-G4	BE-H8	BE-J4	-----	-----
E	-----	-----	BE-C1	BE-D5	BE-F1	BE-G5	BE-I1	BE-J5	-----	-----
F	-----	-----	BE-C2	BE-D6	BE-F2	BE-G6	BE-I2	BE-J6	-----	-----
F#	-----	-----	BE-C3	BE-D7	BE-F3	BE-G7	BE-I3	BE-J7	-----	-----
G	-----	-----	BE-C4	BE-D8	BE-F4	BE-G8	BE-I4	BE-J8	-----	-----
G#	-----	-----	BE-C5	BE-E1	BE-F5	BE-H1	BE-I5	BE-K1	-----	-----
A	-----	-----	BE-C6	BE-E2	BE-F6	BE-H2	BE-I6	BE-K2	-----	-----
A#	-----	-----	BE-C7	BE-E3	BE-F7	BE-H3	BE-I7	BE-K3	-----	-----
B	-----	-----	BE-C8	BE-E4	BE-F8	BE-H4	BE-I8	BE-K4	-----	-----

Rank Addresses

Rank name: (RNK-16) Solo Oboe Horn

	32'	16'	-----8'-----					4'	2'	1'
C	-----	-----	BF-B5	BF-D1	BF-E5	BF-G1	BF-H5	BF-J1	-----	-----
C#	-----	-----	BF-B6	BF-D2	BF-E6	BF-G2	BF-H6	-----	-----	-----
D	-----	-----	BF-B7	BF-D3	BF-E7	BF-G3	BF-H7	-----	-----	-----
D#	-----	-----	BF-B8	BF-D4	BF-E8	BF-G4	BF-H8	-----	-----	-----
E	-----	-----	BF-C1	BF-D5	BF-F1	BF-G5	BF-I1	-----	-----	-----
F	-----	-----	BF-C2	BF-D6	BF-F2	BF-G6	BF-I2	-----	-----	-----
F#	-----	-----	BF-C3	BF-D7	BF-F3	BF-G7	BF-I3	-----	-----	-----
G	-----	-----	BF-C4	BF-D8	BF-F4	BF-G8	BF-I4	-----	-----	-----
G#	-----	-----	BF-C5	BF-E1	BF-F5	BF-H1	BF-I5	-----	-----	-----
A	-----	-----	BF-C6	BF-E2	BF-F6	BF-H2	BF-I6	-----	-----	-----
A#	-----	-----	BF-C7	BF-E3	BF-F7	BF-H3	BF-I7	-----	-----	-----
B	-----	-----	BF-C8	BF-E4	BF-F8	BF-H4	BF-I8	-----	-----	-----

Rank name: (RNK-17) Solo Orchestral Oboe

	32'	16'	-----8'-----					4'	2'	1'
C	-----	-----	BG-B5	BG-D1	BG-E5	BG-G1	BG-H5	BG-J1	-----	-----
C#	-----	-----	BG-B6	BG-D2	BG-E6	BG-G2	BG-H6	-----	-----	-----
D	-----	-----	BG-B7	BG-D3	BG-E7	BG-G3	BG-H7	-----	-----	-----
D#	-----	-----	BG-B8	BG-D4	BG-E8	BG-G4	BG-H8	-----	-----	-----
E	-----	-----	BG-C1	BG-D5	BG-F1	BG-G5	BG-I1	-----	-----	-----
F	-----	-----	BG-C2	BG-D6	BG-F2	BG-G6	BG-I2	-----	-----	-----
F#	-----	-----	BG-C3	BG-D7	BG-F3	BG-G7	BG-I3	-----	-----	-----
G	-----	-----	BG-C4	BG-D8	BG-F4	BG-G8	BG-I4	-----	-----	-----
G#	-----	-----	BG-C5	BG-E1	BG-F5	BG-H1	BG-I5	-----	-----	-----
A	-----	-----	BG-C6	BG-E2	BG-F6	BG-H2	BG-I6	-----	-----	-----
A#	-----	-----	BG-C7	BG-E3	BG-F7	BG-H3	BG-I7	-----	-----	-----
B	-----	-----	BG-C8	BG-E4	BG-F8	BG-H4	BG-I8	-----	-----	-----

Rank name: (RNK-18) Solo Quintadena

	32'	16'	-----8'-----					4'	2'	1'
C	-----	-----	BH-B5	BH-D1	BH-E5	BH-G1	BH-H5	BH-J1	-----	-----
C#	-----	-----	BH-B6	BH-D2	BH-E6	BH-G2	BH-H6	-----	-----	-----
D	-----	-----	BH-B7	BH-D3	BH-E7	BH-G3	BH-H7	-----	-----	-----
D#	-----	-----	BH-B8	BH-D4	BH-E8	BH-G4	BH-H8	-----	-----	-----
E	-----	-----	BH-C1	BH-D5	BH-F1	BH-G5	BH-I1	-----	-----	-----
F	-----	-----	BH-C2	BH-D6	BH-F2	BH-G6	BH-I2	-----	-----	-----
F#	-----	-----	BH-C3	BH-D7	BH-F3	BH-G7	BH-I3	-----	-----	-----
G	-----	-----	BH-C4	BH-D8	BH-F4	BH-G8	BH-I4	-----	-----	-----
G#	-----	-----	BH-C5	BH-E1	BH-F5	BH-H1	BH-I5	-----	-----	-----
A	-----	-----	BH-C6	BH-E2	BH-F6	BH-H2	BH-I6	-----	-----	-----
A#	-----	-----	BH-C7	BH-E3	BH-F7	BH-H3	BH-I7	-----	-----	-----
B	-----	-----	BH-C8	BH-E4	BH-F8	BH-H4	BH-I8	-----	-----	-----

Rank Addresses

Rank name: (RNK-19) Solo String

	32'	16'	-----8'-----					4'	2'	1'
C	-----	-----	BP-B5	BP-D1	BP-E5	BP-G1	BP-H5	BP-J1	BP-K5	-----
C#	-----	-----	BP-B6	BP-D2	BP-E6	BP-G2	BP-H6	BP-J2	-----	-----
D	-----	-----	BP-B7	BP-D3	BP-E7	BP-G3	BP-H7	BP-J3	-----	-----
D#	-----	-----	BP-B8	BP-D4	BP-E8	BP-G4	BP-H8	BP-J4	-----	-----
E	-----	-----	BP-C1	BP-D5	BP-F1	BP-G5	BP-I1	BP-J5	-----	-----
F	-----	-----	BP-C2	BP-D6	BP-F2	BP-G6	BP-I2	BP-J6	-----	-----
F#	-----	-----	BP-C3	BP-D7	BP-F3	BP-G7	BP-I3	BP-J7	-----	-----
G	-----	-----	BP-C4	BP-D8	BP-F4	BP-G8	BP-I4	BP-J8	-----	-----
G#	-----	-----	BP-C5	BP-E1	BP-F5	BP-H1	BP-I5	BP-K1	-----	-----
A	-----	-----	BP-C6	BP-E2	BP-F6	BP-H2	BP-I6	BP-K2	-----	-----
A#	-----	-----	BP-C7	BP-E3	BP-F7	BP-H3	BP-I7	BP-K3	-----	-----
B	-----	-----	BP-C8	BP-E4	BP-F8	BP-H4	BP-I8	BP-K4	-----	-----

Rank name: (RNK-20) Solo Tibia Clausa

	32'	16'	-----8'-----					4'	2'	1'
C	-----	BJ-A1	BJ-B5	BJ-D1	BJ-E5	BJ-G1	BJ-H5	BJ-J1	BJ-K5	BI-L8
C#	-----	BJ-A2	BJ-B6	BJ-D2	BJ-E6	BJ-G2	BJ-H6	BJ-J2	BJ-K6	-----
D	-----	BJ-A3	BJ-B7	BJ-D3	BJ-E7	BJ-G3	BJ-H7	BJ-J3	BJ-K7	-----
D#	-----	BJ-A4	BJ-B8	BJ-D4	BJ-E8	BJ-G4	BJ-H8	BJ-J4	BJ-K8	-----
E	-----	BJ-A5	BJ-C1	BJ-D5	BJ-F1	BJ-G5	BJ-I1	BJ-J5	BJ-L1	-----
F	-----	BJ-A6	BJ-C2	BJ-D6	BJ-F2	BJ-G6	BJ-I2	BJ-J6	BJ-L2	-----
F#	-----	BJ-A7	BJ-C3	BJ-D7	BJ-F3	BJ-G7	BJ-I3	BJ-J7	BJ-L3	-----
G	-----	BJ-A8	BJ-C4	BJ-D8	BJ-F4	BJ-G8	BJ-I4	BJ-J8	BJ-L4	-----
G#	-----	BJ-B1	BJ-C5	BJ-E1	BJ-F5	BJ-H1	BJ-I5	BJ-K1	BJ-L5	-----
A	-----	BJ-B2	BJ-C6	BJ-E2	BJ-F6	BJ-H2	BJ-I6	BJ-K2	BJ-L6	-----
A#	-----	BJ-B3	BJ-C7	BJ-E3	BJ-F7	BJ-H3	BJ-I7	BJ-K3	BJ-L7	-----
B	-----	BJ-B4	BJ-C8	BJ-E4	BJ-F8	BJ-H4	BJ-I8	BJ-K4	BJ-L8	-----

Rank name: (RNK-21) Main Trumpet

	32'	16'	-----8'-----					4'	2'	1'
C	-----	-----	BK-B5	BK-D1	BK-E5	BK-G1	BK-H5	BK-J1	-----	-----
C#	-----	-----	BK-B6	BK-D2	BK-E6	BK-G2	BK-H6	-----	-----	-----
D	-----	-----	BK-B7	BK-D3	BK-E7	BK-G3	BK-H7	-----	-----	-----
D#	-----	-----	BK-B8	BK-D4	BK-E8	BK-G4	BK-H8	-----	-----	-----
E	-----	-----	BK-C1	BK-D5	BK-F1	BK-G5	BK-I1	-----	-----	-----
F	-----	-----	BK-C2	BK-D6	BK-F2	BK-G6	BK-I2	-----	-----	-----
F#	-----	-----	BK-C3	BK-D7	BK-F3	BK-G7	BK-I3	-----	-----	-----
G	-----	-----	BK-C4	BK-D8	BK-F4	BK-G8	BK-I4	-----	-----	-----
G#	-----	-----	BK-C5	BK-E1	BK-F5	BK-H1	BK-I5	-----	-----	-----
A	-----	-----	BK-C6	BK-E2	BK-F6	BK-H2	BK-I6	-----	-----	-----
A#	-----	-----	BK-C7	BK-E3	BK-F7	BK-H3	BK-I7	-----	-----	-----
B	-----	-----	BK-C8	BK-E4	BK-F8	BK-H4	BK-I8	-----	-----	-----

Rank Addresses

Rank name: (RNK-22) Solo Vox Humana

	32'	16'	-----8'-----					4'	2'	1'
C	-----	-----	BL-B5	BL-D1	BL-E5	BL-G1	BL-H5	BL-J1	-----	-----
C#	-----	-----	BL-B6	BL-D2	BL-E6	BL-G2	BL-H6	-----	-----	-----
D	-----	-----	BL-B7	BL-D3	BL-E7	BL-G3	BL-H7	-----	-----	-----
D#	-----	-----	BL-B8	BL-D4	BL-E8	BL-G4	BL-H8	-----	-----	-----
E	-----	-----	BL-C1	BL-D5	BL-F1	BL-G5	BL-I1	-----	-----	-----
F	-----	-----	BL-C2	BL-D6	BL-F2	BL-G6	BL-I2	-----	-----	-----
F#	-----	-----	BL-C3	BL-D7	BL-F3	BL-G7	BL-I3	-----	-----	-----
G	-----	-----	BL-C4	BL-D8	BL-F4	BL-G8	BL-I4	-----	-----	-----
G#	-----	-----	BL-C5	BL-E1	BL-F5	BL-H1	BL-I5	-----	-----	-----
A	-----	-----	BL-C6	BL-E2	BL-F6	BL-H2	BL-I6	-----	-----	-----
A#	-----	-----	BL-C7	BL-E3	BL-F7	BL-H3	BL-I7	-----	-----	-----
B	-----	-----	BL-C8	BL-E4	BL-F8	BL-H4	BL-I8	-----	-----	-----

Rank name: (RNK-23) Chrysoglott

	32'	16'	-----8'-----					4'	2'	1'
C	-----	-----	AL-B5	AL-D1	AL-E5	AL-G1	-----	-----	-----	
C#	-----	-----	AL-B6	AL-D2	AL-E6	AL-G2	-----	-----	-----	
D	-----	-----	AL-B7	AL-D3	AL-E7	AL-G3	-----	-----	-----	
D#	-----	-----	AL-B8	AL-D4	AL-E8	AL-G4	-----	-----	-----	
E	-----	-----	AL-C1	AL-D5	AL-F1	AL-G5	-----	-----	-----	
F	-----	-----	AL-C2	AL-D6	AL-F2	AL-G6	-----	-----	-----	
F#	-----	-----	AL-C3	AL-D7	AL-F3	AL-G7	-----	-----	-----	
G	-----	-----	AL-A8	AL-C4	AL-D8	AL-F4	AL-G8	-----	-----	
G#	-----	-----	AL-B1	AL-C5	AL-E1	AL-F5	-----	-----	-----	
A	-----	-----	AL-B2	AL-C6	AL-E2	AL-F6	-----	-----	-----	
A#	-----	-----	AL-B3	AL-C7	AL-E3	AL-F7	-----	-----	-----	
B	-----	-----	AL-B4	AL-C8	AL-E4	AL-F8	-----	-----	-----	

Rank name: (RNK-24) Marimba Harp

	32'	16'	-----8'-----					4'	2'	1'
C	-----	-----	CD-A1	CD-B5	CD-D1	CD-E5	CD-G1	-----	-----	-----
C#	-----	-----	CD-A2	CD-B6	CD-D2	CD-E6	-----	-----	-----	
D	-----	-----	CD-A3	CD-B7	CD-D3	CD-E7	-----	-----	-----	
D#	-----	-----	CD-A4	CD-B8	CD-D4	CD-E8	-----	-----	-----	
E	-----	-----	CD-A5	CD-C1	CD-D5	CD-F1	-----	-----	-----	
F	-----	-----	CD-A6	CD-C2	CD-D6	CD-F2	-----	-----	-----	
F#	-----	-----	CD-A7	CD-C3	CD-D7	CD-F3	-----	-----	-----	
G	-----	-----	CD-A8	CD-C4	CD-D8	CD-F4	-----	-----	-----	
G#	-----	-----	CD-B1	CD-C5	CD-E1	CD-F5	-----	-----	-----	
A	-----	-----	CD-B2	CD-C6	CD-E2	CD-F6	-----	-----	-----	
A#	-----	-----	CD-B3	CD-C7	CD-E3	CD-F7	-----	-----	-----	
B	-----	-----	CD-B4	CD-C8	CD-E4	CD-F8	-----	-----	-----	

Rank Addresses

Rank name: (RNK-25) Piano

	32'	16'	-----8'-----				4'	2'	1'	
C	-----	AN-A4	AN-B8	AN-D4	AN-E8	AN-G4	AN-H8	AN-J4	AN-K8	-----
C#	-----	AN-A5	AN-C1	AN-D5	AN-F1	AN-G5	AN-I1	AN-J5	-----	-----
D	-----	AN-A6	AN-C2	AN-D6	AN-F2	AN-G6	AN-I2	AN-J6	-----	-----
D#	-----	AN-A7	AN-C3	AN-D7	AN-F3	AN-G7	AN-I3	AN-J7	-----	-----
E	-----	AN-A8	AN-C4	AN-D8	AN-F4	AN-G8	AN-I4	AN-J8	-----	-----
F	-----	AN-B1	AN-C5	AN-E1	AN-F5	AN-H1	AN-I5	AN-K1	-----	-----
F#	-----	AN-B2	AN-C6	AN-E2	AN-F6	AN-H2	AN-I6	AN-K2	-----	-----
G	-----	AN-B3	AN-C7	AN-E3	AN-F7	AN-H3	AN-I7	AN-K3	-----	-----
G#	-----	AN-B4	AN-C8	AN-E4	AN-F8	AN-H4	AN-I8	AN-K4	-----	-----
A	-----	AN-B5	AN-D1	AN-E5	AN-G1	AN-H5	AN-J1	AN-K5	-----	-----
A#	-----	AN-B6	AN-D2	AN-E6	AN-G2	AN-H6	AN-J2	AN-K6	-----	-----
B	-----	AN-B7	AN-D3	AN-E7	AN-G3	AN-H7	AN-J3	AN-K7	-----	-----

Rank name: (RNK-26) Chimes

	32'	16'	-----8'-----				4'	2'	1'
C	-----	-----	-----	-----	BM-A6	BM-C2	-----	-----	-----
C#	-----	-----	-----	-----	BM-A7	BM-G2	-----	-----	-----
D	-----	-----	-----	-----	BM-A8	BM-G3	-----	-----	-----
D#	-----	-----	-----	-----	BM-B1	BM-G4	-----	-----	-----
E	-----	-----	-----	-----	BM-B2	BM-G5	-----	-----	-----
F	-----	-----	-----	-----	BM-B3	BM-G6	-----	-----	-----
F#	-----	-----	-----	-----	BM-B4	BM-G7	-----	-----	-----
G	-----	-----	-----	BM-A1	BM-B5	BM-G8	-----	-----	-----
G#	-----	-----	-----	BM-A2	BM-B6	-----	-----	-----	-----
A	-----	-----	-----	BM-A3	BM-B7	-----	-----	-----	-----
A#	-----	-----	-----	BM-A4	BM-B8	-----	-----	-----	-----
B	-----	-----	-----	BM-A5	BM-C1	-----	-----	-----	-----

Rank name: (RNK-27) Glockenspiel

	32'	16'	-----8'-----				4'	2'	1'
C	-----	-----	-----	BM-D1	BM-D1	BM-E5	BM-G1	BM-G1	-----
C#	-----	-----	-----	BM-D2	BM-D2	BM-E6	BM-E6	-----	-----
D	-----	-----	-----	BM-D3	BM-D3	BM-E7	BM-E7	-----	-----
D#	-----	-----	-----	BM-D4	BM-D4	BM-E8	BM-E8	-----	-----
E	-----	-----	-----	BM-D5	BM-D5	BM-F1	BM-F1	-----	-----
F	-----	-----	-----	BM-D6	BM-D6	BM-F2	BM-F2	-----	-----
F#	-----	-----	-----	BM-D7	BM-D7	BM-F3	BM-F3	-----	-----
G	-----	-----	BM-C4	BM-C4	BM-D8	BM-F4	BM-F4	-----	-----
G#	-----	-----	BM-C5	BM-C5	BM-E1	BM-F5	BM-F5	-----	-----
A	-----	-----	BM-C6	BM-C6	BM-E2	BM-F6	BM-F6	-----	-----
A#	-----	-----	BM-C7	BM-C7	BM-E3	BM-F7	BM-F7	-----	-----
B	-----	-----	BM-C8	BM-C8	BM-E4	BM-F8	BM-F8	-----	-----

Rank Addresses

Rank name: (RNK-28) Sleighbells

	32'	16'	-----8'-----				4'	2'	1'	
C	-----	-----	-----	-----	-----	BM-I8	BM-K4	-----	-----	-----
C#	-----	-----	-----	-----	-----	BM-H5	BM-J1	BM-K5	-----	-----
D	-----	-----	-----	-----	-----	BM-H6	BM-J2	-----	-----	-----
D#	-----	-----	-----	-----	-----	BM-H7	BM-J3	-----	-----	-----
E	-----	-----	-----	-----	-----	BM-H8	BM-J4	-----	-----	-----
F	-----	-----	-----	-----	-----	BM-I1	BM-J5	-----	-----	-----
F#	-----	-----	-----	-----	-----	BM-I2	BM-J6	-----	-----	-----
G	-----	-----	-----	-----	-----	BM-I3	BM-J7	-----	-----	-----
G#	-----	-----	-----	-----	-----	BM-I4	BM-J8	-----	-----	-----
A	-----	-----	-----	-----	-----	BM-I5	BM-K1	-----	-----	-----
A#	-----	-----	-----	-----	-----	BM-I6	BM-K2	-----	-----	-----
B	-----	-----	-----	-----	-----	BM-I7	BM-K3	-----	-----	-----

Rank name: (RNK-29) Xylophone

	32'	16'	-----8'-----				4'	2'	1'	
C	-----	-----	BN-A1	BN-A1	BN-B5	BN-D1	BN-E5	BN-E5	-----	-----
C#	-----	-----	BN-A2	BN-A2	BN-B6	BN-D2	BN-D2	-----	-----	-----
D	-----	-----	BN-A3	BN-A3	BN-B7	BN-D3	BN-D3	-----	-----	-----
D#	-----	-----	BN-A4	BN-A4	BN-B8	BN-D4	BN-D4	-----	-----	-----
E	-----	-----	BN-A5	BN-A5	BN-C1	BN-D5	BN-D5	-----	-----	-----
F	-----	-----	BN-A6	BN-A6	BN-C2	BN-D6	BN-D6	-----	-----	-----
F#	-----	-----	BN-A7	BN-A7	BN-C3	BN-D7	BN-D7	-----	-----	-----
G	-----	-----	BN-A8	BN-A8	BN-C4	BN-D8	BN-D8	-----	-----	-----
G#	-----	-----	BN-B1	BN-B1	BN-C5	BN-E1	BN-E1	-----	-----	-----
A	-----	-----	BN-B2	BN-B2	BN-C6	BN-E2	BN-E2	-----	-----	-----
A#	-----	-----	BN-B3	BN-B3	BN-C7	BN-E3	BN-E3	-----	-----	-----
B	-----	-----	BN-B4	BN-B4	BN-C8	BN-E4	BN-E4	-----	-----	-----

Rank name: (RNK-30) Diaphonic Diapason

	32'	16'	-----8'-----				4'	2'	1'	
C	-----	AM-A1	AM-B5	AM-D1	AM-E5	-----	-----	-----	-----	-----
C#	-----	AM-A2	AM-B6	AM-D2	AM-E6	-----	-----	-----	-----	-----
D	-----	AM-A3	AM-B7	AM-D3	AM-E7	-----	-----	-----	-----	-----
D#	-----	AM-A4	AM-B8	AM-D4	AM-E8	-----	-----	-----	-----	-----
E	-----	AM-A5	AM-C1	AM-D5	AM-F1	-----	-----	-----	-----	-----
F	-----	AM-A6	AM-C2	AM-D6	AM-F2	-----	-----	-----	-----	-----
F#	-----	AM-A7	AM-C3	AM-D7	AM-F3	-----	-----	-----	-----	-----
G	-----	AM-A8	AM-C4	AM-D8	AM-F4	-----	-----	-----	-----	-----
G#	-----	AM-B1	AM-C5	AM-E1	-----	-----	-----	-----	-----	-----
A	-----	AM-B2	AM-C6	AM-E2	-----	-----	-----	-----	-----	-----
A#	-----	AM-B3	AM-C7	AM-E3	-----	-----	-----	-----	-----	-----
B	-----	AM-B4	AM-C8	AM-E4	-----	-----	-----	-----	-----	-----

Rank Addresses

Rank name: (RNK-31) Solo String Celeste

	32'	16'	-----8'-----					4'	2'	1'
C	-----	-----	BI-B5	BI-D1	BI-E5	BI-G1	BI-H5	BI-J1	BI-K5	-----
C#	-----	-----	BI-B6	BI-D2	BI-E6	BI-G2	BI-H6	BI-J2	-----	-----
D	-----	-----	BI-B7	BI-D3	BI-E7	BI-G3	BI-H7	BI-J3	-----	-----
D#	-----	-----	BI-B8	BI-D4	BI-E8	BI-G4	BI-H8	BI-J4	-----	-----
E	-----	-----	BI-C1	BI-D5	BI-F1	BI-G5	BI-I1	BI-J5	-----	-----
F	-----	-----	BI-C2	BI-D6	BI-F2	BI-G6	BI-I2	BI-J6	-----	-----
F#	-----	-----	BI-C3	BI-D7	BI-F3	BI-G7	BI-I3	BI-J7	-----	-----
G	-----	-----	BI-C4	BI-D8	BI-F4	BI-G8	BI-I4	BI-J8	-----	-----
G#	-----	-----	BI-C5	BI-E1	BI-F5	BI-H1	BI-I5	BI-K1	-----	-----
A	-----	-----	BI-C6	BI-E2	BI-F6	BI-H2	BI-I6	BI-K2	-----	-----
A#	-----	-----	BI-C7	BI-E3	BI-F7	BI-H3	BI-I7	BI-K3	-----	-----
B	-----	-----	BI-C8	BI-E4	BI-F8	BI-H4	BI-I8	BI-K4	-----	-----

Rank name: (RNK-32) Main Viole d'Orchestre

	32'	16'	-----8'-----					4'	2'	1'
C	-----	-----	AI-D1	AO-D1	AO-E5	AO-G1	AO-H5	AO-J1	AO-K5	AD-M1
C#	-----	-----	AI-D2	AO-D2	AO-E6	AO-G2	AO-H6	AO-J2	AD-K6	-----
D	-----	-----	AI-D3	AO-D3	AO-E7	AO-G3	AO-H7	AO-J3	AD-K7	-----
D#	-----	-----	AI-D4	AO-D4	AO-E8	AO-G4	AO-H8	AO-J4	AD-K8	-----
E	-----	-----	AI-D5	AO-D5	AO-F1	AO-G5	AO-I1	AO-J5	AD-L1	-----
F	-----	-----	AI-D6	AO-D6	AO-F2	AO-G6	AO-I2	AO-J6	AD-L2	-----
F#	-----	-----	AI-D7	AO-D7	AO-F3	AO-G7	AO-I3	AO-J7	AD-L3	-----
G	-----	-----	AI-D8	AO-D8	AO-F4	AO-G8	AO-I4	AO-J8	AD-L4	-----
G#	-----	-----	AI-E1	AO-E1	AO-F5	AO-H1	AO-I5	AO-K1	AD-L5	-----
A	-----	-----	AI-E2	AO-E2	AO-F6	AO-H2	AO-I6	AO-K2	AD-L6	-----
A#	-----	-----	AI-E3	AO-E3	AO-F7	AO-H3	AO-I7	AO-K3	AD-L7	-----
B	-----	-----	AI-E4	AO-E4	AO-F8	AO-H4	AO-I8	AO-K4	AD-L8	-----

Rank name: (RNK-33) Main Viole d'Orchestre Celeste

	32'	16'	-----8'-----					4'	2'	1'
C	-----	-----	-----	AP-D1	AP-E5	AP-G1	AP-H5	AP-J1	AP-K5	-----
C#	-----	-----	-----	AP-D2	AP-E6	AP-G2	AP-H6	AP-J2	-----	-----
D	-----	-----	-----	AP-D3	AP-E7	AP-G3	AP-H7	AP-J3	-----	-----
D#	-----	-----	-----	AP-D4	AP-E8	AP-G4	AP-H8	AP-J4	-----	-----
E	-----	-----	-----	AP-D5	AP-F1	AP-G5	AP-I1	AP-J5	-----	-----
F	-----	-----	-----	AP-D6	AP-F2	AP-G6	AP-I2	AP-J6	-----	-----
F#	-----	-----	-----	AP-D7	AP-F3	AP-G7	AP-I3	AP-J7	-----	-----
G	-----	-----	-----	AP-D8	AP-F4	AP-G8	AP-I4	AP-J8	-----	-----
G#	-----	-----	-----	AP-E1	AP-F5	AP-H1	AP-I5	AP-K1	-----	-----
A	-----	-----	-----	AP-E2	AP-F6	AP-H2	AP-I6	AP-K2	-----	-----
A#	-----	-----	-----	AP-E3	AP-F7	AP-H3	AP-I7	AP-K3	-----	-----
B	-----	-----	-----	AP-E4	AP-F8	AP-H4	AP-I8	AP-K4	-----	-----

Rank Addresses

Rank name: (RNK-34) Tibia Plena (Clarabella)

	32'	16'	-----8'-----					4'	2'	1'
C	-----	AJ-J7	AJ-L3	-----	-----	-----	-----	-----	-----	-----
C#	-----	AJ-J8	AJ-L4	-----	-----	-----	-----	-----	-----	-----
D	-----	AJ-K1	AJ-L5	-----	-----	-----	-----	-----	-----	-----
D#	-----	AJ-K2	AJ-L6	-----	-----	-----	-----	-----	-----	-----
E	-----	AJ-K3	AJ-L7	-----	-----	-----	-----	-----	-----	-----
F	-----	AJ-K4	AJ-L8	-----	-----	-----	-----	-----	-----	-----
F#	-----	AJ-K5	-----	-----	-----	-----	-----	-----	-----	-----
G	-----	AJ-K6	-----	-----	-----	-----	-----	-----	-----	-----
G#	-----	AJ-K7	-----	-----	-----	-----	-----	-----	-----	-----
A	-----	AJ-K8	-----	-----	-----	-----	-----	-----	-----	-----
A#	-----	AJ-L1	-----	-----	-----	-----	-----	-----	-----	-----
B	-----	AJ-L2	-----	-----	-----	-----	-----	-----	-----	-----

Rank name: (RNK-35) Solo Horn Diapason

	32'	16'	-----8'-----					4'	2'	1'
C	-----	-----	CB-A1	CB-B5	CB-D1	CB-E5	CB-G1	CB-H5	CB-J1	-----
C#	-----	-----	CB-A2	CB-B6	CB-D2	CB-E6	CB-G2	CB-H6	-----	-----
D	-----	-----	CB-A3	CB-B7	CB-D3	CB-E7	CB-G3	CB-H7	-----	-----
D#	-----	-----	CB-A4	CB-B8	CB-D4	CB-E8	CB-G4	CB-H8	-----	-----
E	-----	-----	CB-A5	CB-C1	CB-D5	CB-F1	CB-G5	CB-I1	-----	-----
F	-----	-----	CB-A6	CB-C2	CB-D6	CB-F2	CB-G6	CB-I2	-----	-----
F#	-----	-----	CB-A7	CB-C3	CB-D7	CB-F3	CB-G7	CB-I3	-----	-----
G	-----	-----	CB-A8	CB-C4	CB-D8	CB-F4	CB-G8	CB-I4	-----	-----
G#	-----	-----	CB-B1	CB-C5	CB-E1	CB-F5	CB-H1	CB-I5	-----	-----
A	-----	-----	CB-B2	CB-C6	CB-E2	CB-F6	CB-H2	CB-I6	-----	-----
A#	-----	-----	CB-B3	CB-C7	CB-E3	CB-F7	CB-H3	CB-I7	-----	-----
B	-----	-----	CB-B4	CB-C8	CB-E4	CB-F8	CB-H4	CB-I8	-----	-----

Rank name: (RNK-36) Solo Saxophone

	32'	16'	-----8'-----					4'	2'	1'
C	-----	-----	CC-B5	CC-D1	CC-E5	CC-G1	CC-H5	CC-J1	-----	-----
C#	-----	-----	CC-B6	CC-D2	CC-E6	CC-G2	CC-H6	-----	-----	-----
D	-----	-----	CC-B7	CC-D3	CC-E7	CC-G3	CC-H7	-----	-----	-----
D#	-----	-----	CC-B8	CC-D4	CC-E8	CC-G4	CC-H8	-----	-----	-----
E	-----	-----	CC-C1	CC-D5	CC-F1	CC-G5	CC-I1	-----	-----	-----
F	-----	-----	CC-C2	CC-D6	CC-F2	CC-G6	CC-I2	-----	-----	-----
F#	-----	-----	CC-C3	CC-D7	CC-F3	CC-G7	CC-I3	-----	-----	-----
G	-----	-----	CC-C4	CC-D8	CC-F4	CC-G8	CC-I4	-----	-----	-----
G#	-----	-----	CC-C5	CC-E1	CC-F5	CC-H1	CC-I5	-----	-----	-----
A	-----	-----	CC-C6	CC-E2	CC-F6	CC-H2	CC-I6	-----	-----	-----
A#	-----	-----	CC-C7	CC-E3	CC-F7	CC-H3	CC-I7	-----	-----	-----
B	-----	-----	CC-C8	CC-E4	CC-F8	CC-H4	CC-I8	-----	-----	-----

Rank Addresses

Rank name: (RNK-37) Main Salicional Celeste

	32'	16'	-----8'-----					4'	2'	1'
C	-----	-----	CA-B5	CA-D1	CA-E5	CA-G1	CA-H5	CA-J1	CA-K5	-----
C#	-----	-----	CA-B6	CA-D2	CA-E6	CA-G2	CA-H6	CA-J2	-----	-----
D	-----	-----	CA-B7	CA-D3	CA-E7	CA-G3	CA-H7	CA-J3	-----	-----
D#	-----	-----	CA-B8	CA-D4	CA-E8	CA-G4	CA-H8	CA-J4	-----	-----
E	-----	-----	CA-C1	CA-D5	CA-F1	CA-G5	CA-I1	CA-J5	-----	-----
F	-----	-----	CA-C2	CA-D6	CA-F2	CA-G6	CA-I2	CA-J6	-----	-----
F#	-----	-----	CA-C3	CA-D7	CA-F3	CA-G7	CA-I3	CA-J7	-----	-----
G	-----	-----	CA-C4	CA-D8	CA-F4	CA-G8	CA-I4	CA-J8	-----	-----
G#	-----	-----	CA-C5	CA-E1	CA-F5	CA-H1	CA-I5	CA-K1	-----	-----
A	-----	-----	CA-C6	CA-E2	CA-F6	CA-H2	CA-I6	CA-K2	-----	-----
A#	-----	-----	CA-C7	CA-E3	CA-F7	CA-H3	CA-I7	CA-K3	-----	-----
B	-----	-----	CA-C8	CA-E4	CA-F8	CA-H4	CA-I8	CA-K4	-----	-----

Shutter Information

Shutters are numbered 1 to 24 from the centre of the screen out and consist of large and small shutters as follows.

MAIN CHAMBER

Shutter Number

24 23 22 21 20 19 18 17 16 15 14 13 12 11 10 9 8 7 6 5 4 3 2 1
 L L S L S L S L L L S L S L S L L L L S L S L S L

WALL
SIDE

SCREEN
SIDE

SOLO CHAMBER

Shutter Number

1 2 3 4 5 6 7 8 9 10 11 12 13 14 15 16 17 18 19 20 21 22 23 24
 L S L S L S L L L L S L S L S L L S L S L S L L L

SCREEN
SIDE

WALL
SIDE

SHUTTER OPENING SEQUENCE 3/89

SWELL CONTACT NUMBER	BOTH CHAMBERS Shutter Numbers
1 -----	22
2 -----	6
3 -----	15
4 -----	20
5 -----	4
6 -----	13
7 -----	19
8 -----	3
9 -----	12
10 -----	17, 18
11 -----	1, 2
12 -----	10, 11
13 -----	21, 23
14 -----	7, 8, 16
15 -----	24, 14, 9, 5

Key Sensitivity Setup

Setting The Console Keying Sensitivity

There is a new special function which allows you to change the keying sensitivity (for lack of a better term) on the input cards. Here's how it works. Go into the edit special function items (SPF) where you set such things as Range and Set piston addresses. You will see a couple of new items there: Console Keying and Voltage (under it).

The "Console Keying" now allows an organ to key to "Hot" instead of ground. Do not change this one. All organs sold so far key to ground with the exception of the San Sylmar installation which keys to Hot because of the old Petersen keyer which they did not want to remove just yet.

Caution: if you get this set wrong (set to "hot" in most installations") all keys and stops and pistons would appear to possibly be on with potentially disastrous results (fried chips, etc)! Of course, this would only happen if you went into the RUN mode with it set improperly.

The "Voltage" entry directly below it is the one you may wish to play with in small increments if you are experiencing any keying problems. The range of this number is 1-255 and this represents the voltage at which the input detection circuit switches from "off" to "on". The value of zero is the default and really represents a true value of 96 in the range of 1-255 which translates to a voltage of 3.8 volts. Any input which falls below this voltage of 3.8 volts will be detected as being "on" and any input which is above it will be detected as "off". Thus, when a key or stop switch makes contact with ground, the voltage falls below 3.8 volts and the circuit detects the key or stop switch as "on". Remembering that the default of 0 is really 96, you may wish to play around with values in the area of 70 to 150 or so. Dropping the value below 96 will cause the input detection circuit to become "tougher" to overcome because the voltage will have to drop closer to ground before notes are detected as "on". Dropping the value too far below 96 will eventually cause you to start missing keys and stops which are really on but not overcoming the detection voltage. On the other hand, raising the voltage value above 96 will cause the input detection circuit to become "easier" to overcome. Raising this value too far past 96 (say up to 150 or more) will cause you to start picking up false notes or stops as spurious noise spikes begin to trigger the input circuit and fool it into thinking that keys are actually "on". Lowering the value increases the systems immunity to noise while raising the value decreases the systems immunity to noise. Each system will have a different threshold voltage which provides a happy medium. The value of 96 (or zero to be compatible with old software) seemed to be fine for most systems but we are now finding out that variances in chips has caused some systems to require other keying voltages.

The new software now allows this value to be tailored to the individual installation. Incidentally, this software cured the remaining noise problems at the San Sylmar installation. Of course, their values are around 220 instead of 96 because they key to "hot" instead of to ground the way all other installations do.

Devtronix Floppies to PC

Copying Combination Files
from PC to Devtronix Diskettes

You need the DOS utility DVDISK.EXE available.

1) Start DvDisk

2) You must (A)ssign the floppy - put a Devtronix Disk in Drive B:, press the Down arrow so the arrow next to SOURCE moves to TARGET, type A and hit ENTER. It will read the floppy and put the disk name on the screen.

3) Press the Up arrow and the cursor will change from TARGET to SOURCE. You must now (A)ssign (log to) the simulated disk (Subdirectory) on the PC. The directory required is called COMBOS so type A COMBOS and press ENTER. DvDisk will log to it and put the diskname on the screen.

4) To see the files on either disk just use the arrow keys to choose which one you want to see and then press D and return to get a directory listing. In this case you are already on the Source disk which is the PC so simply type D.

5) Note the C file you are after and return to the main menu (ESC - same as Devtronix).

6) You are ready to (C)opy so simply type C C? (where ? is the C file number) and press return. You may copy more than one by typing C C? C? C? then ENTER. You can copy all combination files by typing C C then ENTER

7) A Screen will appear asking for you to choose a copy option. I suggest you choose F as it will put whatever C file you are copying to C1 on the floppy if there is nothing on it already. Whatever you do, the file can be moved on the Devtronix computer afterwards anyhow.

8) Press Q and Enter to quit the program as per the main menu.

NOTE: To copy from the floppy to the PC simply press X and press Enter. This will exchange SOURCE for TARGET.

Devtronix Computer Disc Controller Setup

DEVTRONIX CPU MOTHER BOARD DISC CONTROLLER ALIGNMENT

Under the Ribbon cable to the disc drive are 3 pots. These are the ones used in this line up procedure.

A 20meg Scope is required for this line up.

Note - measure ALL following pins BEFORE adjusting ANY.

Turn power OFF.

Place a wire on IC U18 (has red dots painted on it) pin 22. Leave other end free for a minute.

Turn power ON.

Press Reset.

After 2nd Beep ground pin 22 and hold it there. This is the state it must be in for measurement and line up.

Set scope to 1uS/Div 1/2 volt sensitivity.

There should be a square wave of 4uS (one cycle) on pin 16.

If not adjust centre trimmer to get square wave of 4 - 4.75uS
(TOSA S.A. measured 3.4v P/P level)

Move CRO probe to pin 29 - use 5x probe. Still 1uS/Div.

There should be a pulse of 500nS duration (.5uS) This must be accurate. If wrong - adjust Pot RV 1.
(TOSA S.A. measured 3.6v P/P level)

Move CRO probe to pin 31. Same CRO setting.

There should be a pulse of 210nS width. If not adjust with RV 2.

This time must also be accurate.

(TOSA S.A. measured approx 3.5v P/P)

END OF DISK DRIVE CONTROLLER SET UP

Other things to check if there are problems

If it is crashing - unplug the small 4 pin plug that comes from the reset switch on the front panel. Now looking from the front of the computer the pin on the RHS is pin 4. Hang a CRO on pin 4.

Check there is Data happening when disk loading. If the computer crashes Pin 4 should go blank. If it is still active there is a loss of the logic power supply in the ribbon cable FROM the console. That ribbon is where the computer gets its logic 15v from. This is separate to all other internal supplies in the computer.

The 5V from the computer supply must be accurate. This can be measured on the yellow wire coming from the computer power supply.

If any chips are shorted on an output board also replace the 4050 or 4010 chip on that output board. This chip acts as a buffer to prevent any damage on the buss if there is a blow out on the board. However it often gets damaged if there is a blowout so it should be replaced.

Some people have run separate Grounds to each board from the common buss to ensure a good connection for the chips spark suppression to work.

5 bypass capacitors on each output board is OK.

Terminals supported by Devtronix system software 1.9

Term 0 - Qume (entry level terminal)

Term 3 - Televideo 925

Term 6 - Wyse 30

Devtronix Info

RS-232 cabling.

	PIN		
+-----	1	Shield	}
	2	Red	}
Tied	3	Orange	}
together	7	Green	}
to Earth	20	Blue	}
	18	White	}
+-----	25	Black	}

These only needed for actual terminal.

Used for remote reset (Hardwired in CPU)

TO ADD MIDI OUTPUT

Add a Rank to RNK list - call it Midi and set up addresses for 84 notes starting at 16' and address MA-A1

Make a tab operate it and link to it as a Normal rank (Type 3) 8'

Check what UNT - Midi (type 4) means.

All Midi devices may be attached by using rank addresses starting with M eg MA MB MC etc.

Trems are:

MAIN CHAMBER	SOLO CHAMBER
Main	Harmonic Tuba
Tuba Horn	Tibia Clausa
Tibia Minor	Melodia
Strings	Solo 1
Vox Humana	Solo 2
	Vox Humana

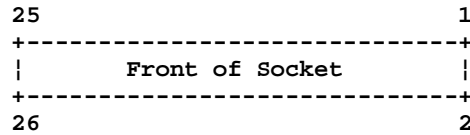
Percussions:

Chimes C#3 - E4	Backwired at bottom
Glock G2 - C5	Backwired top and bottom
Sleighbells C#3 - C5	-
Xylophone C2 - C5	Backwired top and bottom
Chrysoglott C2 - C6	
Marimba C2 - C6	

Devtronix Info

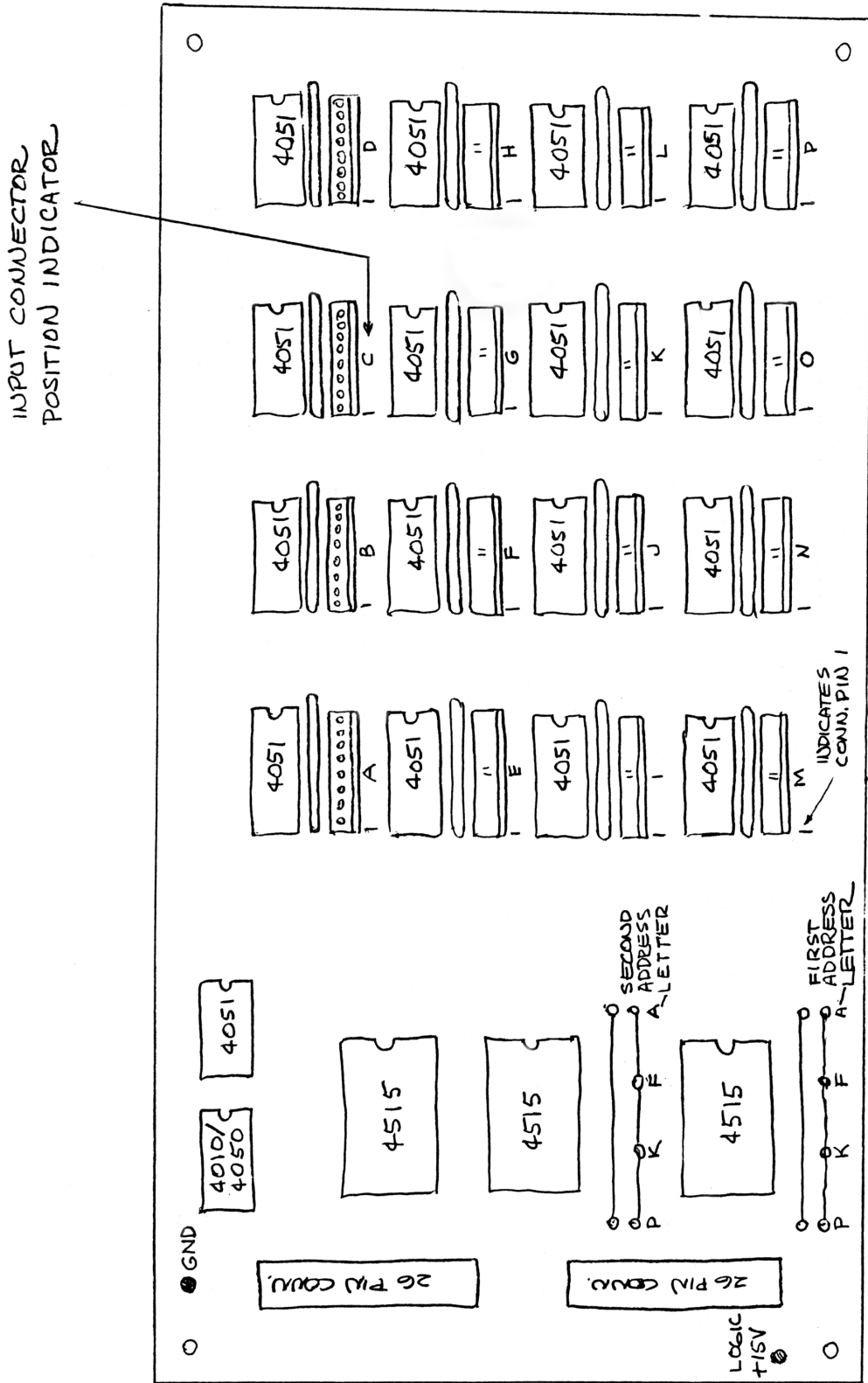
Output Board interface cable connections:

- 1 Ground
- 2 Strobe - DO NOT TERMINATE
- 3 Data Line 0 - Fastest data rate here. Each subsequent line divided by 2.
- 4 Data Line 1
- 5 Data Line 2
- 6 Data Line 3
- 7 Data Line 4
- 8 Data Line 5
- 9 Data Line 6
- 10 Data Line 7
- 11 Data line 8
- 12 Data Line 9
- 13 Data Line 10
- 14 Data Line 11
- 15 Data Line 12
- 16 Data Line 13
- 17 Data Line 14
- 18 Reset 1 - DO NOT TERMINATE
- 19 Data Line 15
- 20 Reset 2 - DO NOT TERMINATE
- 21 Ground
- 22 +
- 23 | Logic +
- 24 +
- 25 N/C
- 26 Ground



If terminating the ribbon cables in the chambers, using 1K resistors will 1/2 the voltage swing available.

Input Board Layout

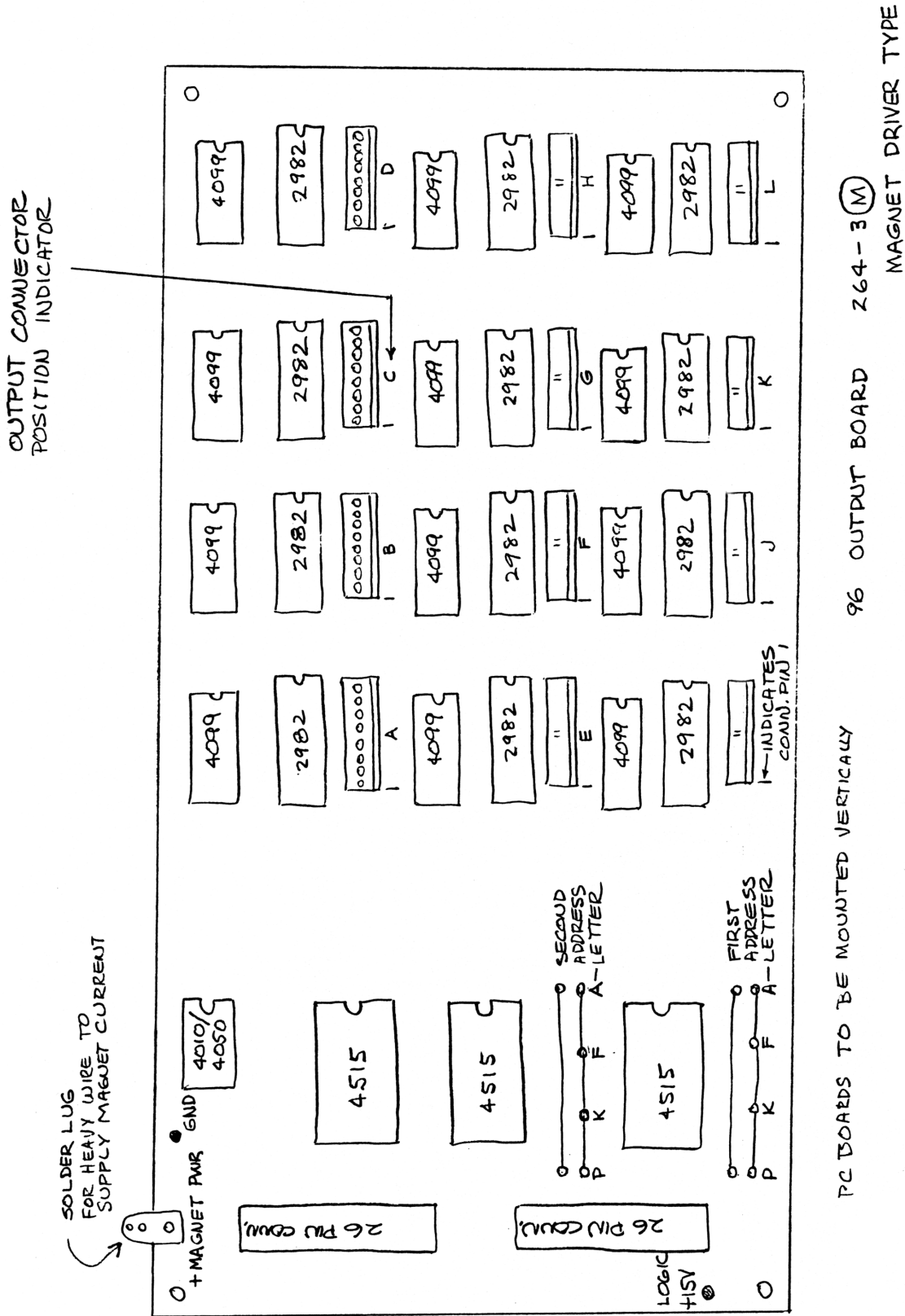


INPUT CONNECTOR
POSITION INDICATOR

PC BOARDS TO BE MOUNTED VERTICALLY
12B INPUT BOARD 264-2
MOUNT IN CONSOLE ONLY

PC 124-02 REV E

Output Board Layout



PC BOARDS TO BE MOUNTED VERTICALLY

96 OUTPUT BOARD 264-3(M)

MAGNET DRIVER TYPE

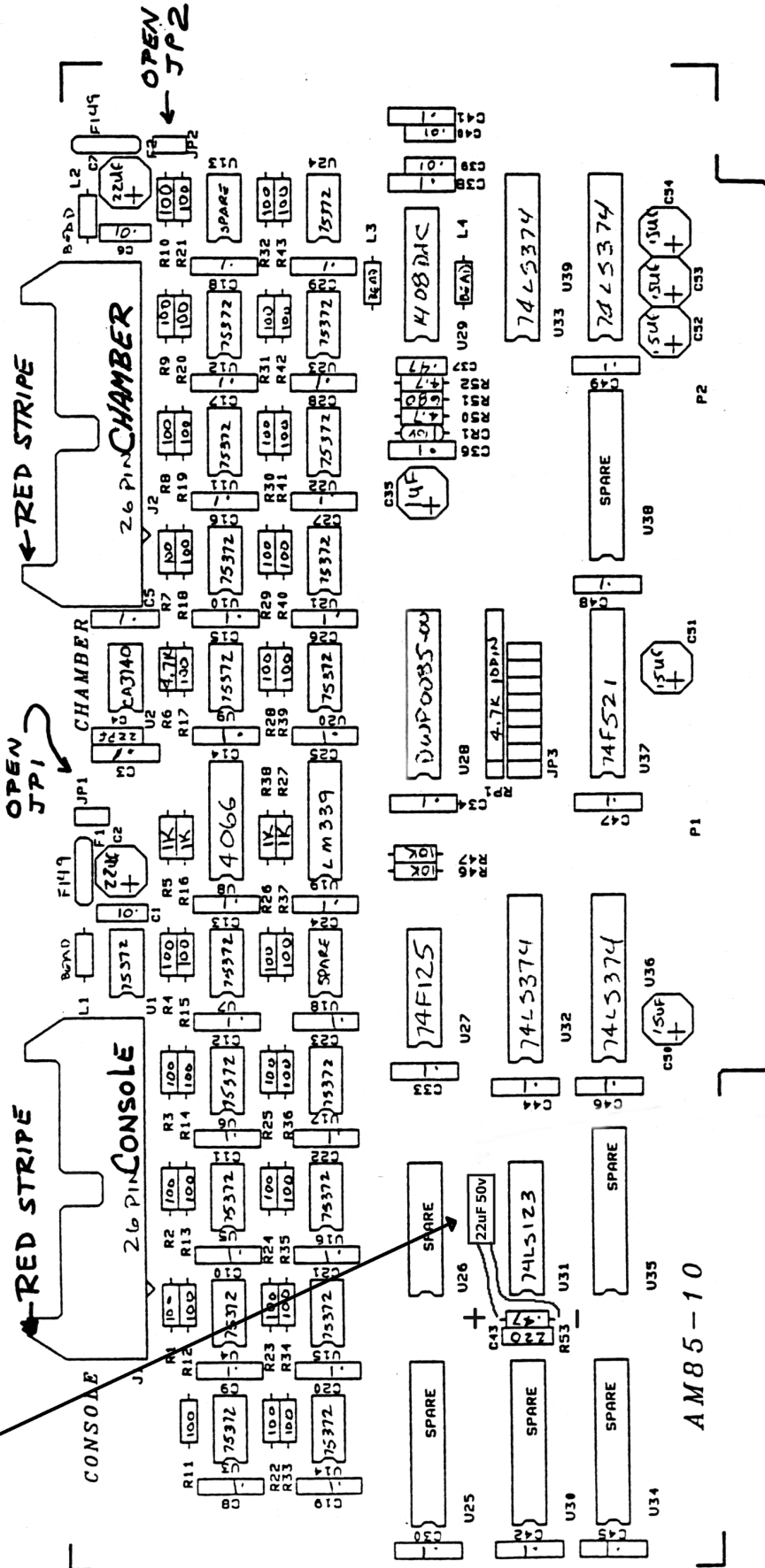
PC 124-04 REV F

Uniflex PC Interface Card Layout

Add this 22uF capacitor across here to use the interface board with the Windows 98 software. (Wired as switchable at the Capri).

ALPHA MICROSYSTEMS			
MOTEL NO.	DATE		
FH65-10	10/94		
DOCUMENT NO.	REV	DDP	SILK
DAK-00065-10	B00		

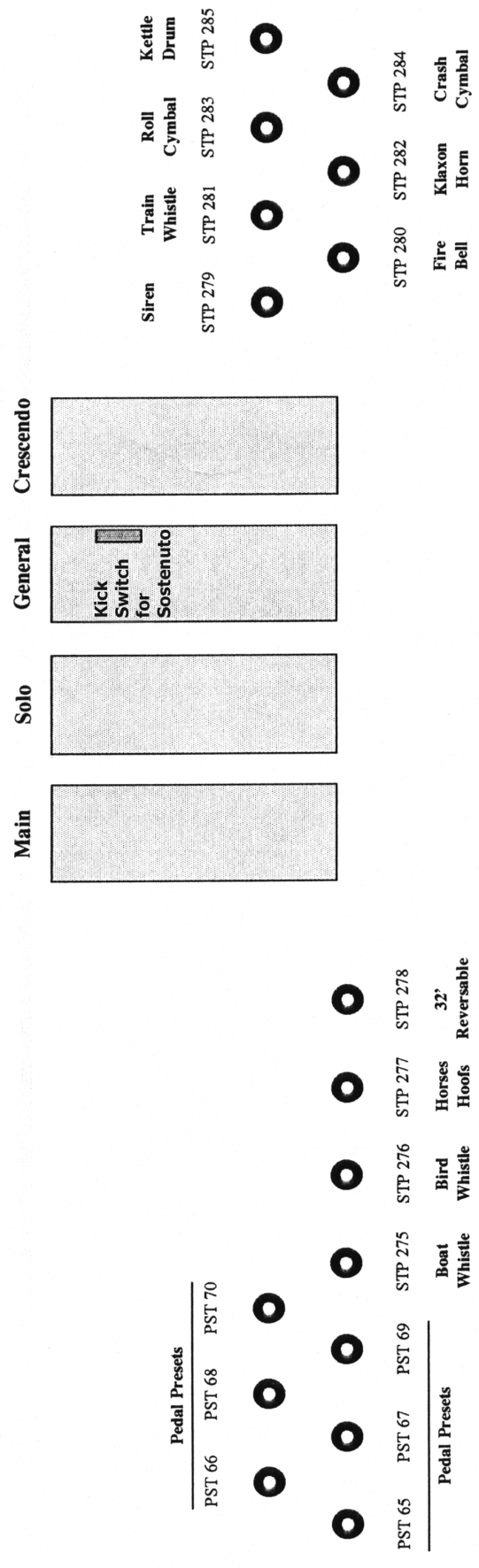
VIEWED FROM COMPONENT SIDE



AMB5-10

Swell and Toe Piston Layout

Capri Theatre 4/29 organ Swell and Toe Piston Layout



Advanced Playback & Panel Programming

Available, but not really for general Capri users, is an advanced playback feature that I term the "Global Juke Box". By pre defining a series of commands, one is able to play back any piece of music from any artist in any order that is required. This does require some "technical" work from someone familiar with the Uniflex file system and editing text files. It can also involve making some "Panels" which are just custom groups of buttons with commands tied to them.

Setting up the playlists.

The basic workings are this: A text file called **TunesList.cmd** is placed in the C:\Uniflex folder. It consists of a series of short lines similar to below (between the asterix lines):

```
; This is the Capri tunes command file.
; Any line you see with a semi colon at the
; beginning is ignored and can be used
; to write any comments needed.
;The TunesList.cmd file should be located in the C:\uniflex directory, and can hold ALL the tune
;sequences you might want to create.
```

[WaynesFavourites]

Strony

P6

P9

P2

Williams

P7 ; Grasshopper song

P12 ; Boogie Woogie

P5

Fenelon

P16

P7

[WardyTunes]

Johnston

P8

P3

McPhee

P5

P3

P25

[FitzzyFavourites]

; and so on as required.

This file simply holds a batch list of the commands as if you were to do them one at a time. Each section can be called up by either typing the heading which is in the square brackets, or tying the command to a button on screen. When activated, everything BELOW the header e.g. [WaynesFavourites] is executed one at a time until the next square bracket comes up. At that point it stops reading the file. The only thing is, that each of the user names must exist for it to play the particular tunes. Therefore in the short example above, there must be users under the BASE folder called **Strony**, **Williams** and **Fenelon**. The base folder can be changed before you run any of these playlists. After executing the command WaynesFavourites, the Uniflex will change to user Strony, load D1 and C1 and them play tracks 6, 9 and 2 in succession. It will then change to user Williams, load that user's D1 and C1 and play tracks 7, 12 and 5 in succession. Finally it will change to user Fenelon and play tracks 16 and 7. It will end at the square bracket two lines down at [WardyTunes].

I found that you can put a semi colon in and list the track's name on the same line as the track to play. This is of course optional but I find it easier to read the **TunesList.cmd** file if you edit it later.

Playing the playlists

Having set up the file that holds the sequences to play you need to actually be able to call them up. This can be achieved in either of 2 ways. You can set up a panel of buttons with all the headers listed from the **TunesList.cmd** file (e.g. WaynesFavourites, WardyTunes etc) as shown before or, if you know the names you can call them direct.

It is essential due to the way this tune sequencer works, that the artist user names DO NOT contain any numbers. This is not negotiable because it will not work if you ignore this.

This information is based on Uniflex Ver 400X. Note that 400Y or 400Z must not be used as there is a problem with them correctly interpreting some commands, including the panels.

Advanced Playback & Panel Programming

Calling them Direct

If you know there is a sequence called `WaynesFavourites`, you can type it directly at the command line:

`WaynesFavourites` and press **ENTER**.

Using a Panel of Buttons

Panels of buttons can be set up the same way as the initial panels of buttons is set up (the text file `UNIFLEX.PNL`). Here is the header of a typical `Uniflex.pnl` file showing how it is set up:

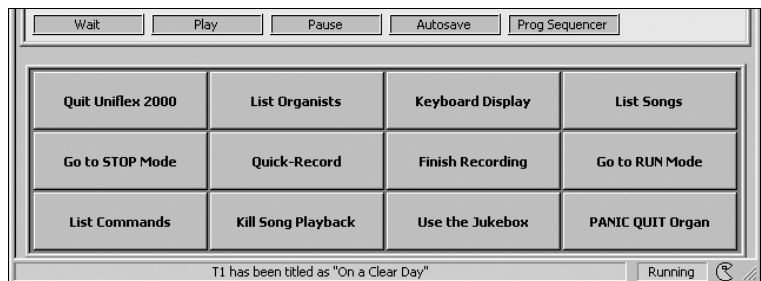
```
Panel="MainPanel" X=7 Y=248 Width=614 Height=165
Array Cols=4 Rows=3 Space=2
```

```
Button="Quit Uniflex 2000" Text = Red Cmd=quit
Button="List Organists" Text = Blue Cmd=ArtistPanel
Button="Keyboard Display" Cmd=DisplayKeyboards
Button="List Songs" Cmd=Dir
```

```
Button="Go to STOP Mode" Cmd=Stop
Button="Quick-Record" Cmd=R
Button="Finish Recording" Cmd=F
Button="Go to RUN Mode" Cmd=Run
```

```
Button="List Commands" Cmd=Commands
Button="Kill Song Playback" Cmd=Kill
Button="Use the Jukebox" Cmd=Jukebox
Button="PANIC QUIT Organ" Cmd=panic
```

You can see here how the text file relates to the buttons on the screen. The `Text=????` is optional and will change the text colour on the button as you would expect. The `Cmd=?????` is the command that will happen when the button is clicked on. These commands are the same as if you typed them on the command line.



You can define other panels and call them up at any time, so you can set up panels with a lot of buttons with names of peoples favourite sequences of tunes. When clicked on, the command will be the header name, the same as if you typed it in manually as described above.

Typically there are 2 panel files already set up called `TunesA.pnl` and `TunesB.pnl`. You call up `TunesA.pnl` by typing **TunesA** and pressing **ENTER**.

Here is a little of the `TunesA` header:

```
Panel="TunesA" X=7 Y=80 Width=614 Height=320
Array Cols=4 Rows=10 Space=2 Autohide
```

```
Cols=1
Button=">>> CONTROL FUNCTION BUTTONS <<<<"
```

```
Cols=4
Button="WATCH THE KEYS" Cmd="DisplayKeyboards"
Button="NEXT FAVORITES LIST" Cmd="TunesB"
Button="SELECT FROM JUKE-BOX" Cmd="JukeBox"
Button="KILL THE PLAYLIST" Cmd="Kill"
```

```
Cols=1
Button=">>> Capri Maintenance Boys Favourite Tunes <<<<"
```

```
Cols=3
```

```
Button="Waynes good stuff" Text=Blue Cmd="WaynesFavourites.cmd"
Button="Wardy likes these" Text=Blue Cmd="WardyTunes.cmd"
Button="Fitzzy's Favourite pieces" Text=Blue Cmd="FitzzyFavourites.cmd"
```

It is very important if you make a panel file (.pnl) that the name on this line for `Panel=` is different for each panel. Most important - the name you put in here is the name that you type or use as a `CMD=` tied to a button, to activate the panel. The actual file name is not important BUT I suggest you use the same name so you can look at the file name and know the command to call the panel up.



How the panel looks

You can see how the commands on the buttons relate to the sections of the `TunesList.cmd` on the previous page. You can also see that the command for the button titles `"NEXT FAVOURITES LIST"` is `cmd=TunesB` and this will call up the second panel. The command `Autohide` at the top sets the panel to disappear as soon as a button has been clicked on. This may or may not be what you want. If you want it to stay there and then manually press `ESC` to back out of it, simply delete the word `Autohide`.

Advanced Playback & Panel Programming

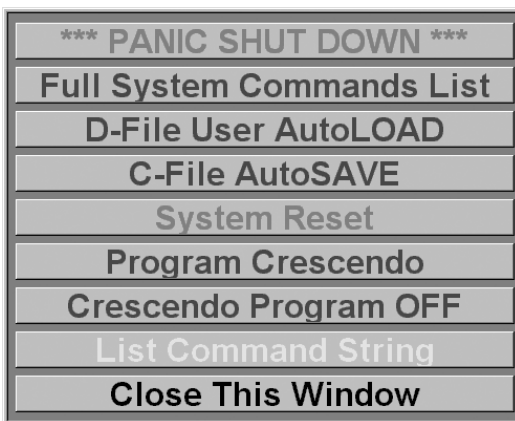
*** Important ***

If you make changes to any of these files, you must completely exit the Uniflex program and restart it so it will reread the files and "know" about the changes.

Also, if you have made a mistake when making a change and forgotten an inverted comma, say in the Button = " " then the Uniflex program will completely LOCK UP and therefore not start properly and be unusable. In that case you will have to quit the program with Windows task manager and then check and correct the file you were editing before starting the Uniflex again.

The Tools Panel

There is another panel called **Tools.pnl** which can be called up from the STOP screen as well. This looks like this:



The complete text file for this Tools.pnl

```
Panel="Tools" X=50 Y=10 Width=500 Height=400 Autohide
Array Cols=1 Rows=9 Font=Vgb25 Space=7
Button="*** PANIC SHUT DOWN ***" Text=RED Cmd="Panic"
Button="Full System Commands List" Text=Blue Cmd="commands"
Button="D-File User AutoLOAD" Text=Blue Cmd="Autoload"
Button="C-File AutoSAVE" Text=Blue Cmd="Autosave"
Button="System Reset" Text=RED Cmd="Reset"
Button="Program Crescendo" Text=Blue Cmd="PC"
Button="Crescendo Program OFF" Text=Blue Cmd="ProgramOff"
Button="List Command String" Text=Cyan Cmd="Stack"
Button="Close This Window" Cmd=""
```

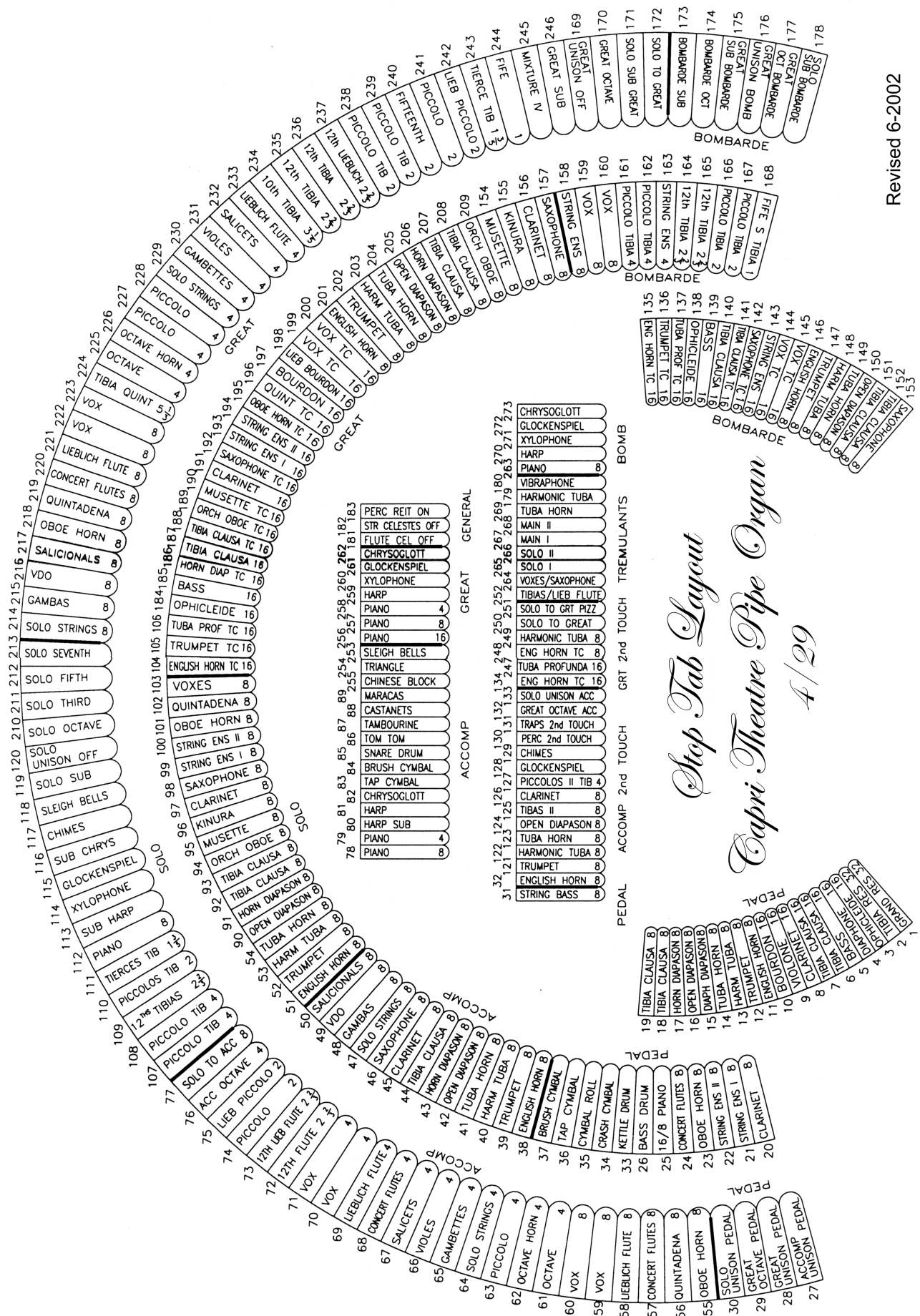
It just contains a list of common commands and it saves you from remembering and typing some of them. Again, you may change the layout, button names, colours and commands by editing the file.

Notes

Notes

Notes

Console Tab Layout



Revised 6-2002